





COUSIN TRESTEC, THE TECHNICAL ROPE EXPERT

Synonym for technical and professional reference on the rope market, Cousin Trestec symbolizes the rigor and know-how of a large industrial group. With more than 160 years of experience in **rope manufacturing**, Cousin Trestec has become a leading name in the fields of **sports** (sailing, kitesurf, climbing, paragliding, parachute, canyoning) as well as **industry** (lifting, furnishing, special events, aeronautics, offshore, military operations, automobile...).

COUSIN TRESTEC IS:

- *Over 160 years of experience*
(of which over 50 years in the manufacturing of climbing ropes)
- *47 000 km of ropes manufactured each year*
(diameters from 0.5 to 80 mm)
- *60 000 plaites*
- *Present on markets all over the world*

EXPERTISE AND INNOVATION

The perfect know-how of all manufacturing processes (twisting, drawing, impregnation...) together with the best thermic treatments (anti-static, hydrophobic, anti-abrasion...) make of Cousin Trestec a major actor in the ropes industry. Combining technical and innovation is the leitmotif of Cousin research teams. Their privileged collaboration with the greatest sportsmen allows to offer innovative products adapted to all, amateurs as well as professionals.





SINGLE ROPES

BASALTIC 9.4	P 6
TRANSALP 9.8	P 6
QUARTZ II 10.2	P 7
GRAN TORINO 10.4	P 8
TEPEE 10.2	P 9
TOP ROCK 11 MM	P 9

DOUBLE ROPES

PRO ALPINE 8.2	P 10
PRO FORCES 9 MM	P 10
TWITTER 8.5	P 11

DOUBLE & TWIN ROPES

PRO LIGHT 7.7	P 12
---------------	------

SINGLE, DOUBLE & TWIN ROPES

OPTIMA 8.9	P 13
------------	------

HIKING ROPE

RANDO 8 MM	P 14
------------	------

CORDS & SEWN WEBBING LOOPS

P 15

CAVING & CANYONING

SPÉLUNCA VECTRAN 9.6	P 16
CRISTALINE 10.5	P 16
TECHTONIC 9 MM	P 18
TECHTONIC 10 MM	P 18
TECHTONIC 10.5 MM	P 19

COUSIN GUARANTEE & TRACEABILITY

P 20

DYNAMIC & SEMI-STATIC ROPES STANDARDS

P 21

COUSIN TRESTEC TREATMENTS

P 22

GLOSSARY

P 23



©Bertrand Delapierre

CLIMBING * MOUNTAINEERING HIKING * CAVING

Whether hiking, extreme mountaineering or sport climbing, Cousin Trestec offers climbers and hikers light and robust ropes to live their passion safely. Easy to handle and reassuring, Cousin dynamic ropes meet the requirements of all users, beginners and experienced climbers alike.

QUALITY ENGAGEMENT

To offer best quality products, the technical and quality requirements are part of Cousin Trestec's core concerns. Achieving the best quality standards such as **CE**, **UIAA** label, **ISO 9001**, **NFPA** certification... is a proof of this commitment.



All of our products are tested in our own in-house laboratory. We carry out breaking strength tests up to 100 tons, wear and tear tests, flexion tests as well as impact tests.



COUSIN TRESTEC ROPES RANGE

COUSIN TRESTEC ROPES RANGE		INDOOR CLIMBING	USE			MOUNTAINEERING	HIKING	CAVING & CANYONING
			OCCASIONAL	INTENSIVE	HIGH LEVEL			
DYNAMIC ROPES								
①	SINGLE ROPES							
	BASALTIC 9.4			▲	▲	▲		
	TRANSALP 9.8			▲	▲	▲	▲	
	QUARTZ II 10.2	▲	▲	▲				
	GRAN TORINO 10.4	▲	▲					
	TEPEE 10.2	▲	▲	▲			▲	
	TOP ROCK 11 MM	▲	▲	▲				
½	DOUBLE ROPES							
	PRO ALPINE 8.2					▲	▲	
	PRO FORCES 9 MM					▲	▲	
	TWITTER 8.5					▲	▲	
½ ②	DOUBLE & TWIN ROPES							
	PRO LIGHT 7.7					▲	▲	
① ½ ②	SINGLE, DOUBLE & TWIN ROPES							
	OPTIMA 8.9			▲	▲	▲	▲	
HIKING ROPE								
	RANDO 8 MM						▲	
CORDS & SEWN WEBBING LOOPS								
	CORDS							
	SEWN WEBBING LOOPS							
SEMI-STATIC ROPES								
CAVING & CANYONING ROPES								
	SPÉLUNCA VECTRAN 9.6							▲
	CRISTALINE 10.5							▲
	TECHTONIC 9 MM							▲
	TECHTONIC 10 MM							▲
	TECHTONIC 10.5 MM							▲

BASALTIC 9.4

1

High dimensional stability. Compactness and roundness appreciated. Its light weight allows significant energy savings when using karabiners.

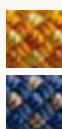
► USE

The ultimate rope for extreme climbing when each gram counts to reach performance.



► DIAMETER	9.4 mm
► NUMBER OF PLAITS	40
► STATIC ELONGATION	7.3 %
► FLEXIBILITY TO KNOT	0.9
► BREAKING STRENGTH	2 070 daN
► SHEATH PERCENTAGE	33.3 %
► COMPONENT	100 % polyamide

► COLOR



TRANSALP 9.8

1

Excellent handling. Multi-purpose, especially for sport climbing. Very good flexibility and handling. Its 9.8 diameter offers a very interesting weight.

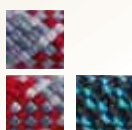
► USE

Rope perfectly suited to all belaying devices.



► DIAMETER	9.8 mm
► NUMBER OF PLAITS	48
► STATIC ELONGATION	9.8 %
► FLEXIBILITY TO KNOT	0.89
► BREAKING STRENGTH	2 400 daN
► SHEATH PERCENTAGE	36 %
► COMPONENT	100 % polyamide

► COLOR





©Bertrand Delapierre

1

QUARTZ II 10.2

A good balance between diameter, impact force and weight. Very good grip.

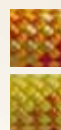
► USE

For climbers looking for performance and comfort during repeated falls.



► DIAMETER	10.2 mm
► NUMBER OF PLAITS	48
► STATIC ELONGATION	9.1 %
► FLEXIBILITY TO KNOT	0.74
► BREAKING STRENGTH	2 448 daN
► SHEATH PERCENTAGE	32.8 %
► COMPONENT	100 % polyamide

► COLOR



GRAN TORINO 10.4

1

Very supple. Exceptional durability and long life span. Interesting number of falls.

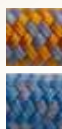
► USE

The benchmark rope for indoor or any intensive use.



► DIAMETER	10.4 mm
► NUMBER OF PLAITS	32
► STATIC ELONGATION	8.2 %
► FLEXIBILITY TO KNOT	0.94
► BREAKING STRENGTH	2 215 daN
► SHEATH PERCENTAGE	41 %
► COMPONENT	100 % polyamide

► COLOR



1

TEPEE 10.2

Multi-purpose, this rope offers excellent safety.

► USE

Multi-purpose climbing.



► DIAMETER	10.2 mm
► NUMBER OF PLAITS	32
► STATIC ELONGATION	7.7 %
► FLEXIBILITY TO KNOT	0.88
► BREAKING STRENGTH	2 230 daN
► SHEATH PERCENTAGE	49.6 %
► COMPONENT	100 % polyamide

► COLOR



1

TOP ROCK 11 MM

High resistance and durability thanks to its 30% reinforced sheath.

► USE

Great safety in intensive use.



► DIAMETER	10.7 mm
► NUMBER OF PLAITS	32
► STATIC ELONGATION	6.4 %
► FLEXIBILITY TO KNOT	0.79
► BREAKING STRENGTH	2 465 daN
► SHEATH PERCENTAGE	39.2 %
► COMPONENT	100 % polyamide

► COLOR



PRO ALPINE 8.2

1/2

*Light and fluid dynamic rope.
Very good grip.*

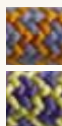
► USE

Very safe for mountain, snow, ice and mixed routes.



► DIAMETER	8.2 mm
► NUMBER OF PLAITS	32
► STATIC ELONGATION	11.4 %
► FLEXIBILITY TO KNOT	0.87
► BREAKING STRENGTH	1 610 daN
► SHEATH PERCENTAGE	36.6 %
► COMPONENT	100 % polyamide

► COLOR



PRO FORCES 9 MM

1/2

*High performance,
robust multi-purpose rope.*

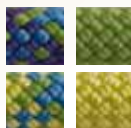
► USE

For multi-pitch rock climbs, adventure climbing and mountaineering.



► DIAMETER	8.6 mm
► NUMBER OF PLAITS	40
► STATIC ELONGATION	10 %
► FLEXIBILITY TO KNOT	0.87
► BREAKING STRENGTH	1 515 daN
► SHEATH PERCENTAGE	40 %
► COMPONENT	100 % polyamide

► COLOR





©Xavier Leroux

1/2

TWITTER 8.5

Fluid and robust, this rope is particularly well suited for mountaineering and ice climbing.

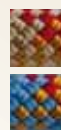
► USE

Adventure climbing and multi-purpose mountaineering.



► DIAMETER	8.5 mm
► NUMBER OF PLAITS	40
► STATIC ELONGATION	10.9 %
► FLEXIBILITY TO KNOT	0.9
► BREAKING STRENGTH	1 500 daN
► SHEATH PERCENTAGE	39 %
► COMPONENT	100 % polyamide

► COLOR



DOUBLE & TWIN ROPES

PRO LIGHT 7.7



Used either double or twin, this rope is the lightest one on the market.

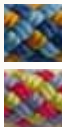
► USE

Adventure and ice climbing.

	IMPACT FORCE	NUMBER OF FALLS	SHEATH SLIPPAGE	WEIGHT PER METRE	DYNAMIC ELONGATION
1/2	550 daN	5	4 mm	38 g/m	35.7 %
∞	850 daN	16	4 mm	38 g/m	32.3 %

	1/2	∞
► DIAMETER	7.6 mm	7.7 mm
► NUMBER OF PLAITS	32	32
► STATIC ELONGATION	11.6 %	9.6 %
► FLEXIBILITY TO KNOT	0.95	0.95
► BREAKING STRENGTH	1420 daN	1420 daN
► SHEATH PERCENTAGE	38 %	38 %
► COMPONENT	100 % polyamide	100 % polyamide

► COLOR





©Bertrand Delapierre

SINGLE, DOUBLE & TWIN ROPES



OPTIMA 8.9

Light, fluid multi-purpose rope.

► USE

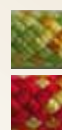
This rope will satisfy extreme climbers as well as traditional ones.



	①	1/2	∞
► IMPACT FORCE	780 daN	590 daN	900 daN
► NUMBER OF FALLS	5	15	37
► SHEATH SLIPPAGE	0 mm	0 mm	0 mm
► WEIGHT PER METER	54 g/m	54 g/m	54 g/m
► DYNAMIC ELONGATION	36 %	32.3 %	28 %

	①	1/2	∞
► DIAMETER	8.9 mm	8.9 mm	8.9 mm
► NUMBER OF PLAITS	40	40	40
► STATIC ELONGATION	9.2 %	9.2 %	5.4 %
► FLEXIBILITY TO KNOT	0.82	0.82	0.82
► BREAKING STRENGTH	2040 daN	2040 daN	2040 daN
► SHEATH PERCENTAGE	33 %	33 %	33 %
► COMPONENT	100 % polyamide	100 % polyamide	100 % polyamide

► COLOR





RANDO 8 MM

*Very practical for hiking
and mountain skiing.*

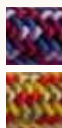
► USE

Confidence rope for crossing tricky sections on hikes and scrambles.



► DIAMETER	8 mm
► NUMBER OF PLAITS	32
► COMPONENT	100 % polyamide

► COLOR



CORDS



Multi-purpose cords. Available in different lengths and 25m or 200m reels.



► USE

Used only as auxiliary for climbing, mountaineering, caving and working at heights.

► COLOR



► DIAMETER	2 mm	3 mm	4 mm	5 mm	6 mm	7 mm
► WEIGHT	2 g/m	6.5 g/m	10.9 g/m	15.3 g/m	24.7 g/m	30.7 g/m
► BREAKING STRENGTH	87 daN	260 daN	>320 daN	>500 daN	>720 daN	>980 daN
► LENGTHS	10 m	10 m	7 m	6 m	5.5 m	4 m
► COMPONENT	100 % polyamide					
► STANDARD			CE EN564	CE EN564	CE EN564	CE EN564



SEWN WEBBING LOOPS



sewn webbing loops in different lengths, 19mm large. Breaking strength: 2200 daN.

► USE

Webbing for anchors and belays.

► COLOR



	ORANGE	BLUE	YELLOW	RED
► LENGTH	0.60 m	0.80 m	1.20 m	1.50 m
► COMPONENT	100 % polyamide			
► STANDARD	CE NF EN566 & EN795			



SPELUNCA VECTRAN 9.6 B

semi-static rope with special internal thread reducing the elongation and the "yo-yo" effect on long pitches.

► USE

Very low elongation rope.



► DIAMETER	9.8 mm
► CORE PERCENTAGE	57.6 %
► NUMBER OF PLAITS	32
► ELONGATION FROM 50 TO 150 KG	1 %
► FLEXIBILITY TO KNOT	0.82
► BREAKING STRENGTH	> 1800 daN
► RETRACTION	1.5 %
► COMPONENT	Polyamide, Vectran®

► COLOR



CRISTALINE 10.6 B

safe, this semi-static rope is very appreciated by users.

► USE

Lightweight rope, permanent flexibility for easy handling.



► DIAMETER	10.9 mm
► CORE PERCENTAGE	55.2 %
► NUMBER OF PLAITS	32
► ELONGATION FROM 50 TO 150 KG	2.80 %
► FLEXIBILITY TO KNOT	0.73
► BREAKING STRENGTH	2230 daN
► RETRACTION	0.10 %
► BREAKING STRENGTH WITH A FIGURE-OF-8 KNOT	1510 daN
► COMPONENT	Polyester, Polypropylene

► COLOR





©Jocelyn Chavy



©Jocelyn Chavy



©Jocelyn Chavy

TECHTONIC 9 MM

B

Perfectly designed for caving, this rope offers an excellent abrasion-resistance & flexibility ratio.

► USE

Especially made for deep caves where the size of any carried rope is of critical importance.



► DIAMETER	9 mm
► CORE PERCENTAGE	58 %
► NUMBER OF PLAITS	32
► ELONGATION FROM 50 TO 150 KG	5 %
► FLEXIBILITY TO KNOT	0.8
► BREAKING STRENGTH	2 470 daN
► RETRACTION	2.60 %
► BREAKING STRENGTH WITH A FIGURE-OF-8 KNOT	> 1 200 daN
► COMPONENT	100 % polyamide

► COLOR



TECHTONIC 10 MM

A

Light, high performance and stable semi-static rope.

► USE

Suitable for all surroundings and all levels of steepness.



► DIAMETER	10 mm
► CORE PERCENTAGE	58 %
► NUMBER OF PLAITS	32
► ELONGATION FROM 50 TO 150 KG	5 %
► FLEXIBILITY TO KNOT	1
► BREAKING STRENGTH	2 930 daN
► RETRACTION	2.70 %
► BREAKING STRENGTH WITH A FIGURE-OF-8 KNOT	> 1 500 daN
► COMPONENT	100 % polyamide

► COLOR





©Damien Locatelli



TECHTONIC 10.5 MM

Comfortable diameter, perfectly suitable for use in hazardous surroundings.

► USE

The benchmark rope, the most popular rope in caving.



► DIAMETER	10.5 mm
► CORE PERCENTAGE	57 %
► NUMBER OF PLAITS	32
► ELONGATION FROM 50 TO 150 KG	4.60 %
► FLEXIBILITY TO KNOT	1
► BREAKING STRENGTH	3 140 daN
► RETRACTION	2.60 %
► BREAKING STRENGTH WITH A FIGURE-OF-8 KNOT	> 1 500 daN
► COMPONENT	100 % polyamide

► COLOR



COUSIN TRESTEC GUARANTEE

3 YEARS

All of our ropes are guaranteed for 3 years **against all manufacturing faults.**

This guarantee obviously **excludes normal wear and tear** of the rope or **any problem resulting from a poor storage or maintenance.**

COUSIN GUARANTEE also excludes all damage to the rope resulting from use in any other purpose than climbing, mountaineering or work at height.

Made to last, our ropes have the UIAA label and are **CE EN892** or **CE EN1891** compliant.

TRACEABILITY

Cousin Trestec ropes have a **unique identification number "UNI".**

It allows you to follow the chain of production and find all the features of the rope.

The ropes are supplied, no matter what their presentation, with a **user guide**, a product label and end labels on which regulatory information is provided.

For their safety, or in case of a rope being cut into several lengths, it is the responsibility of the user to guarantee the presence of **relevant markings at each end of the rope.**



SERVICE LIFE

The service life of the product depends on the frequency and type of use.

The use of the rope with **mechanical devices, friction, UV rays, humidity**, will speed up wear and tear.

DURATION OF USE

INTENSIVE USE • 3 months to 1 year

AVERAGE USE • 2 to 3 years

REGULAR BUT LIGHT USE • 4 to 5 years

INFREQUENT USE • 10 years
(maximum duration of use)

DYNAMIC AND SEMI-STATIC ROPES STANDARDS

DYNAMIC ROPES

CE EN892 compliant. Designed especially for climbing, these ropes must be used any time a move is made above an anchor point. Able to absorb energy generated by a violent fall thanks to their elasticity, these ropes are made for experienced people. Ropes known as “Single” with a diameter less than 10.5 mm are now the most commonly used on the market.

EN892 MAIN REQUIREMENTS EXTRACT			
TYPE	Single rope ①	Double rope ②	Twin rope ③
NUMBER OF FALLS (FACTOR 2)	≥ 5 (80 kg)	≥ 5 (55 kg)	≥ 12 (80 kg 2 strands)
IMPACT FORCE (FACTOR 2)	≤ 1200 daN	≤ 800 daN	≤ 1200 daN
DYNAMIC ELONGATION (FACTOR 2)	< 40 %	< 40 %	< 40 %
STATIC ELONGATION	≤ 10 %	≤ 12 %	≤ 10 %
SHEATH SLIPPAGE	≤ 20 mm	≤ 20 mm	≤ 20 mm

SEMI-STATIC ROPES

More precisely called static or braided ropes, they have a low elongation coefficient.

EN1891 standard compliant these ropes are mainly used to reach, to position or to maintain oneself at ones working station. With low elongation, ropes known as “semi-static” avoid the “Yo-yo” effect when climbing or while suspended. These ropes offer great reliability and have a wide range of applications, particularly in the 10.5 mm and 11 mm diameters.

EN1891 MAIN REQUIREMENTS EXTRACT		
TYPE	Ⓐ	Ⓑ
NUMBER OF FALLS (FACTOR 1)	≥ 5 (100 kg)	≥ 5 (80 kg)
IMPACT FORCE (FACTOR 0.3)	≤ 600 daN (100 kg)	≤ 600 daN (80 kg)
STATIC ELONGATION (50 TO 150 KG)	≤ 5 %	≤ 5 %
STATIC LOAD	2 200 daN minimum	1 800 daN minimum
STATIC LOAD WITH FIGURE-OF-8 KNOT (3 MINUTES)	1 500 daN	1 200 daN
SHEATH SLIPPAGE	< 20+10 (Ø-9 mm) if Ø ≤ 12 mm < 20+5 (Ø-12 mm) if 12.1 < Ø < 16 mm	< 20+10 (Ø-9 mm) if Ø ≤ 12 mm < 20+5 (Ø-12 mm) if 12.1 < Ø < 16 mm

COUSIN TRESTEC TREATMENTS



Impregnation process of each individual sheath component that significantly improves the resistance of the rope to dust, moisture and abrasion in classical usage. First line of defense against external aggression, this treatment provides excellent durability.



Exclusive process of optimizing the mechanical characteristics of each polyamide thread during the braiding operation and of each component used in the manufacture of our climbing ropes.



Marking of the middle of the rope by black line. Sustainable and practical when preparing an abseiling, hoisting a rope or simply evaluate the remaining length of rope.



Polyamide materials are recycled, reused. A responsible and honest approach.

COUSIN TRESTEC OPTIONAL TECHNOLOGIES



Hydrophobic treatment of the core and sheath, which limits the moisture absorption and increases the resistance to abrasion. This treatment offers a high protection of the rope against the water infiltration through the polymerization technique.



The ThermoCore is a process that involves fusing the sheath and the core of the rope by heatfusion in order to remove the "sock" effect. This method confers the rope an exceptional breaking strength, limited internal abrasion and slippage.



Our ropes are packed in an exclusive coiling technique allowing a quick and easy unwinding of the rope. The rope is immediately ready to use for climbing.

StopAqua, ThermoCore and AntiTwist options are available only on request on our pre-cut lengths exclusively.

GLOSSARY

DYNAMIC ROPES

①

SINGLE ROPES

Can be used as a single strand as a link between the climber and the belayer. Mountain and cliff activities, indoor, etc.

①/2

DOUBLE ROPES

Separate karabiner for each possible strand enables best results in the mountain, on long routes and for ice climbing, etc.

②

TWIN ROPES

It is necessary to karabiner the two strands at each safety point. For use in the mountains or for ice climbing.

SEMI-STATIC ROPES

A

A TYPE ROPE

This rope should allow movement and progression. It is to be used for descent or ascent. Can be used for caving, canyoning, working on rope, rescue and safety practices.

B

B TYPE ROPE

Rope of lower diameter and strength than A type rope, requiring more precaution and care during use. Use in caving, canyoning, work on rope, rescue or security practices.



L'EXPERT EN CORDAGES TECHNIQUES
THE TECHNICAL ROPE EXPERT

In view to a permanent improvement policy of our publications, we reserve the right to change or modify the characteristics of any of the products shown in this catalogue without prior notice. Furthermore, this document is not contractual, and is published subject to errors or omissions.