

BC1

WATERCRAFT

ACCESSORIES



POINT 65°N
SWEDEN

OCEAN  **KAYAK**

Old Town
CANOES X KAYAKS


AQUA
MARINE

OVERBOARD

 **GERBER**

Leading Brands Leading Availability Leading Service

- ◆ Leading brands brought to your door from all over the globe
- ◆ Dedicated e-commerce site
- ◆ Online pricing, quick and simple ordering
- ◆ Flexible delivery options – designed to minimise costs
- ◆ Special bulk deal pricing for trade users
- ◆ Extensive product and industry knowledge from a friendly and helpful team



Expanded Product Range

Bainbridge have worked hard with an extended portfolio of global manufacturers to bring you an even wider product range.

Specially designed to cover entry level, mid-range and technical price points.

These enhancements make our very latest product offering the most comprehensive we have ever had.

The ranges shown in this catalogue are offered from stock in the UK. In addition to this selection, special Old Town and Ocean Kayak models not shown in this catalogue may still be available as special order items, and can be integrated with our regular stock shipments. Please contact our sales team regarding these models.

We look forward to presenting the latest range and developments – enabling you to grow your product sales and margins with our competitive collection.

info@bainbridgeint.co.uk
bainbridgewatercraft.com



Contents

Point 65

Plutini, Pluto 8.8	2
Falcon	3
Seadog, Seadog Angler	4
Tequila GTX	5
Martini GTX	6
Mercury GTX	7
Buccaneer	8
X013	9 - 10
Whiskey 16	11
Doubloon	12
Accessories	13

Ocean Kayak

Malibu 9.5, 11.5, TWO, TWO XL, Pedal	14 - 15
Prowler 13 Angler	16
Trident 13 Angler	17

Old Town

Predator 13	17
Topwater 106, 120, PDL	18 - 19
Discovery 119, 158, 169 & Outfitters	20 - 24
Paddles	25
Accessories	26 - 27

RUK

Overboard

Dry Ice Cooler Bags

Sail Cloth Bags

Gerber

Lowrance

Lifebuoys/Lines/First Aid

AquaMarine - Buoyancy Aids

Rope

Polyform Fenders

Pumps

Starbrite

Part Number Index page 52

POINT 65°N
S W E D E N

PLUTINI

♦ The Plutini is a playful kayak specifically designed for kids. It is safe, comfortable, manoeuvrable and super-stable. Great for lakes, beaches and rivers.

Specifications

Length	185cm / 6'1"
Width	61cm / 24"
Depth	23cm / 9"
Weight	8,5kg / 19 lbs
Capacity	54kg / 121 lbs
Backrest	Yes
Warranty	1 Year

Red - PSF016215210004



Skeg Wheel for easy transportation



TOP
SELLER

PLUTO 8.8

♦ Introducing the Pluto 8.8. A fun, versatile, high-performance sit-on-top kayak which is easy to paddle.

Specifications

Length	264cm / 8'8"
Width	66cm / 26"
Depth	25cm / 10"
Weight	17kg / 39 lbs
Capacity	124kg / 275 lbs
Backrest	Yes
Warranty	1 Year

Yellow - PSF01615211803



Skeg Wheel for easy transportation



TOP
SELLER

POINT 65°N
S W E D E N

Falcon

- ♦ Affordable
- ♦ Strong & durable 1-layer HTP
- ♦ Great tracking & performance
- ♦ Recessed tank wells aft and front for gear
- ♦ Quick lock hatches in front and mid sections
- ♦ Take apart for easy storage
- ♦ Snap-tap take apart system
- ♦ Solo or tandem combination
- ♦ Padded back pads
- ♦ Integrated cup holders

Specifications

Length Solo	269cm / 8'10"
Length Tandem	388cm / 12'9"
Width	62cm / 24,2"
Weight single	18kg / 40 lbs
Weight tandem	30kg / 67 lbs
Weight per section (approx)	9-11kg / 20-24 lbs
Capacity Solo	100kg / 220 lbs
Capacity Tandem	220kg / 440 lbs
Front section length	140cm / 55"
Mid section length	140cm / 55"
Stern section length	140cm / 55"
Quick-lock hatch	16 x 13,5 cm / 6.3 x 5.3"
Backrest	Yes
Warranty	1 Year

Solo: Red - PSF016015211704
Tandem: Red - PSF016015221704



Falcon Solo



Falcon Tandem



POINT 65°N
S W E D E N

SEADOG

- ◆ When designing the SeaDog, no effort was spared in creating the optimal performance of a 295cm / 9'8" sit-on-top kayak, while maximizing comfort and stability.
- ◆ Using the most advanced design technology available, paired with life-long experience and a deep understanding of the sea, we have managed to create an outstanding craft.
- ◆ Performance kayaking
- ◆ Comfortable and ingenious

Specifications

Length	295cm / 9'8"
Width	75cm / 29,5"
Weight	22kg / 48,5 lbs
Capacity	125kg / 298 lbs
Backrest	Yes

Orange/Yellow -
PSF000130010017

Blue/White -
PSF000130010015

Orange/Yellow including
clip apart 220cm paddle -
PSF130010017206

Blue/White including clip
apart 220cm paddle -
PSF130010015206



SEADOG
ANGLER

- ◆ When designing the SeaDog Angler, no effort was spared in creating the optimal performance of a 295cm / 9'8" sit-on-top fishing kayak, while maximizing comfort and stability.
- ◆ Equipped for fishing with 2 rod holders and 1 rod mounting holder
- ◆ Performance kayaking
- ◆ Comfortable and ingenious backrest

Specifications

Length	295cm / 9'8"
Width	75cm / 29,5"
Weight	22kg / 48,5 lbs
Capacity	125kg / 298 lbs
Backrest	Yes

Green/White/Black with clip apart Day Tripper paddle -
PSF001000525820

POINT 65°N
S W E D E N

Tequila!

- ◆ A new level of innovation for recreational kayaks. A fun, versatile and high-performance kayak that, due to its modularity, is exceptionally easy to carry, store, and haul. The revolutionary solo or tandem combination is the solution you were waiting for.
- ◆ Snap-tap locking system keeps all sections securely latched together
- ◆ Four-step footrests accommodate paddlers of all sizes
- ◆ Built-in carry handles, paddle park, bottle holders and gear storage
- ◆ Made of strong, impact and UV-resistant polyethylene that's also maintenance-free and recyclable
- ◆ Splits apart for easy storage and transport
- ◆ AIR backrest for easy adjustment included
- ◆ Equipped with fin for easier tracking
- ◆ Clips together and apart in less than 10 seconds

SOLO:

Red - PSF015301210104
Yellow - PSF015301210103
Blue - PSF015301210109
Lime - PSF015301210108

TANDEM:

Red - PSF015301220104
Yellow - PSF015301220103
Blue - PSF015301220109
Lime - PSF015301220108

Specifications

Length Solo	295cm / 9'8"
Length Tandem	416cm / 13'8"
Width	75cm / 29,5"
Weight Solo	22kg / 48,5 lbs
Weight Tandem	35kg / 77 lbs
Weight per section (approx)	11kg / 24,3 lbs
Capacity Solo	100kg / 265 lbs
Capacity Tandem	240kg / 530 lbs
Front cockpit section length	166cm / 5'5"
Extension mid-section length	163cm / 5'4"
Stern section length	169cm / 5'7"
Warranty	1 Year



POINT 65°N
S W E D E N

Martini GTX

- ◆ Strong and durable 1-layer PE (polyethylene)
- ◆ Great tracking & performance
- ◆ Super comfy AIR seat
- ◆ Watertight compartments fore and aft
- ◆ Rudder integrated in hull design
- ◆ Take-apart for easy storage
- ◆ Snap-tap take-apart system
- ◆ Solo or tandem combination

Solo specific features:

- ◆ Integrated cup holders behind cockpit
- ◆ Paddlepark on left side

Tandem specific features:

- ◆ Integrated cup holders behind cockpits
- ◆ Paddlepark for both cockpits

Specifications

Length Solo	285cm / 9'4"
Length Tandem	416cm / 13'8"
Width	70cm / 27,6"
Weight Solo	22kg / 48,5 lbs
Weight Tandem	35kg / 77 lbs
Weight per section (approx)	12kg / 24,3 lbs
Capacity Solo	100kg / 265 lbs
Capacity Tandem	240kg / 530 lbs
Front section length	142cm / 4'8"
Mid-section length	163cm / 5'4"
Stern section length	142cm / 4'8"
Cockpits	83x46cm / 33x18"
Front Hatch	20x20cm / 7,9x7,9"
Rear Hatch	44x26cm / 17x10"
Rudder	Yes
Warranty	1 Year

SOLO:

Red - PSF015401210104
Yellow - PSF015401210103
Lime - PSF015401210108

TANDEM:

Red - PSF015401220104
Yellow - PSF015401220103
Lime - PSF015401220108



Martini Solo



Martini Tandem



POINT 65°N
S W E D E N

Mercury GTX

- ◆ Strong & durable 1-layer PE (polyethylene)
- ◆ Great tracking & performance
- ◆ Super comfy AIR seat
- ◆ Watertight compartments fore and aft
- ◆ Foil shaped rudder included
- ◆ Take-apart for easy storage
- ◆ Snap-tap take-apart system
- ◆ Solo or tandem combination
- ◆ Integrated cup holders behind cockpit

SOLO:

Red - PSF015101210104
Yellow - PSF015101210103

TANDEM:

Red - PSF015101220104
Yellow - PSF015101220103

Specifications

Length Solo	414cm / 13' 7"
Length Tandem	543cm / 17'10"
Width	60cm / 23,6"
Weight Solo	25kg / 55 lbs
Weight Tandem	35kg / 77 lbs
Weight per section (approx)	11kg / 24 lbs
Capacity Solo	140kg / 310 lbs
Capacity Tandem	280kg / 620 lbs
Nose section length	107cm / 42"
Front cockpit section length	158cm / 62"
Extension mid-section length	147cm / 58"
Back section length	160cm / 63"
Rudder	Yes
Warranty	1 Year



Mercury Solo



Mercury Tandem



BUCCANEER

- ◆ Affordable
- ◆ Great tracking & performance
- ◆ Great for rental & beginners courses
- ◆ Strong and durable 1-layer PE (polyethylene)
- ◆ Optional 3-layer PE (lighter & stiffer)
- ◆ Rear and front hatch
- ◆ Bulkheads
- ◆ Adjustable rudder pedals
- ◆ Comfort backrest

Specifications

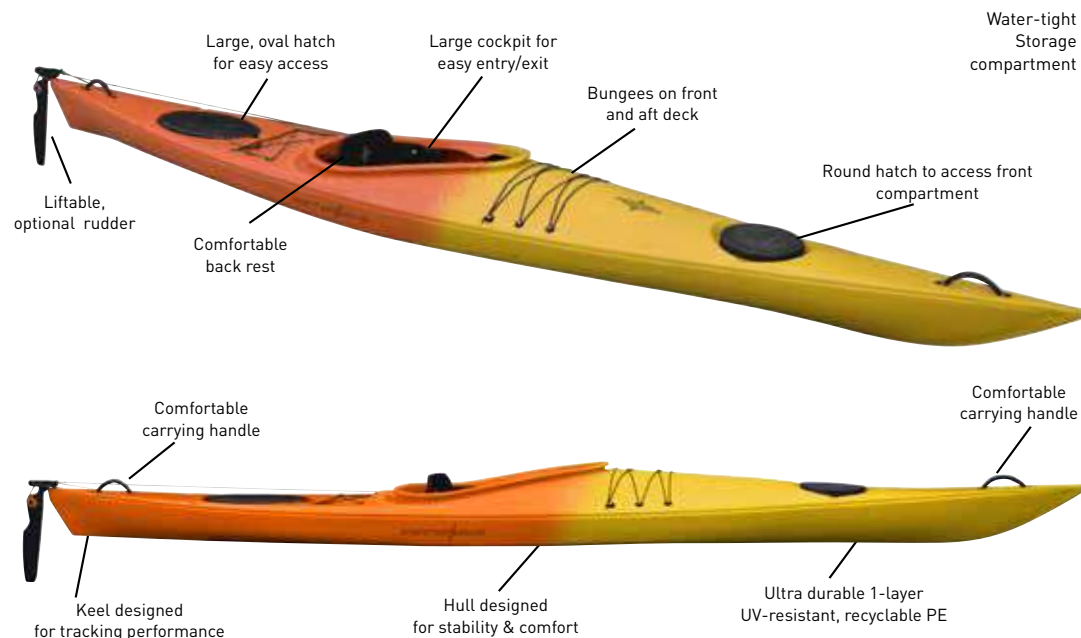
Length	450cm / 14'9"
Width	63cm / 25"
Weight	24kg / 53 lbs
Capacity	155kg / 342 lbs
Cockpit	83x46cm / 33x18"
Front hatch	24x24cm / 9.5 x 9.5"
Rear hatch	44x26cm / 17x10"
Rudder	Yes*

*Optional

Yellow / Orange - PSF000158011017



Easy to adjust rudder pedals



X013

GS Day Tourer

- ◆ Great tracking & performance
- ◆ Great fun for expert and beginner alike

X013 GS Skeg features:

- ◆ Kink-free symmetry skeg system with precision adjustment from cockpit
- ◆ Foot rests with precision adjustment
- ◆ Comfortable seat with back rest
- ◆ Oval 44x26 cm hatches front and aft for easy storage
- ◆ Molded-in locking pin on deck for security
- ◆ Cockpit designed for easy entry/exit
- ◆ Soft touch cockpit-rim pads ergonomically molded for comfortable carrying
- ◆ Padded thigh braces for improved control
- ◆ Deck bungees for securing deck bags or other items on front and aft deck
- ◆ Deck safety lines with reflective threads for higher visibility
- ◆ Carrying toggles front and aft
- ◆ Ultra durable 1-layer PE for durability and strength

X013 GS Rudder & Skeg specific features:

- ◆ Rudder pedals with precision adjustment and self adjusting rudder lines
- ◆ Liftable rudder for improved control and tracking

Specifications

Length	400cm / 13'
Width	63cm / 25"
Weight	25kg / 55 lbs
Capacity	155kg / 342 lbs
Cockpit	83x46cm / 33x18"
Front Hatch	44x26cm / 17x10"
Aft Hatch	44x26cm / 17x10"
Skeg	Yes
Rudder	Yes*
Warranty	1 Year

*Optional

Yellow / Orange - PSF014001020917

White / Blue - PSF014001020915



POINT 65°N SWEDEN

X013

Grand Tourer Expedition GTE Skeg

- Great tracking & performance
- Great fun for expert and beginner alike

Specific features:

- AIR seat with vertically adjustable backrest with sculptured padding on seat, back and hips with built-in inflatable air bags for ultimate position
- Kink-free symmetry skeg system with precision adjustment from cockpit
- Foot rests with precision adjustment
- Comfortable seat with back rest
- Oval 44x26 cm hatches front and aft for easy storage
- Molded-in locking pin on deck for security
- Cockpit designed for easy entry/exit
- Soft touch cockpit-rim pads ergonomically molded for comfortable carrying
- Padded thigh braces for improved control
- Deck bungees for securing deck bags or other items on front and aft deck
- Deck safety lines with reflective threads for higher visibility
- Carrying toggles front and aft

- Ultra durable 1-layer PE for durability and strength

Rudder & Skeg specific features:

- Rudder pedals with precision adjustment and self adjusting rudder lines
- Liftable rudder for improved control and tracking

Specifications

Length	400cm / 13'
Width	63cm / 25"
Weight	25kg / 55 lbs
Capacity	155kg / 342 lbs
Cockpit	83x46cm / 33x18"
Front Hatch	44x26cm / 17x10"
Aft Hatch	44x26cm / 17x10"
Skeg	Yes
Rudder	Yes*
Warranty	1 Year

*Optional

Yellow / Orange - PSF000141011917

White / Blue - PSF000141011915



POINT 65°N SWEDEN

Whisky 16

ROCKER SKEG

- Very stable open water kayak
- Extremely maneuverable
- Suitable for both beginners and experts
- Extra hatch in front of cockpit
- Key hole cockpit
- Contrast decklines
- Air back rest and performance seat
- Design by Nigel Foster

Rudder & Skeg specific features:

- 3-Layer rotomolded (PE) with an ultra durable PE for a stiffer and lighter hull
- Performance backrest & seat
- Liftable rudder
- Easy-adjust rudder pedals with mini-line lockers

Specifications

Length	488cm / 16'
Width	56cm / 22"
Weight	25kg / 55 lbs
Capacity	155kg / 342 lbs
Cockpit	76x41cm / 31x16"
Front & Aft Hatches	44x26cm / 17x10"
Day Hatch	20x20cm / 7.9x7.9"
Front Day Hatch	15x15cm / 6x6"
Rudder	Yes*
Warranty	1 Year

*Optional

Blue - PSF000115020207

Orange - PSF000115020205



POINT 65°N S W E D E N DOUBLOON

- ◆ Affordable
- ◆ Great tracking and performance
- ◆ Great fun for expert and beginner alike
- ◆ Rear and front hatches
- ◆ Bulkheads
- ◆ Rudder pedals and foot rests
- ◆ Retractable skeg
- ◆ Lifiable rudder
- ◆ Comfort backrests
- ◆ 3-Layer rotomolded (PE) with an ultra durable PE for a stiffer and lighter hull

Specifications

Length	510cm / 16'8"
Width	68cm / 26,8"
Weight 3-layer	33kg / 72,8 lbs
Capacity	235kg / 518 lbs
Cockpits	83x46cm / 33x18"
Front hatch	24cm / 9,5x9,5"
Rear hatch	44x26cm / 17x10"
Skeg	Yes
Rudder	Yes

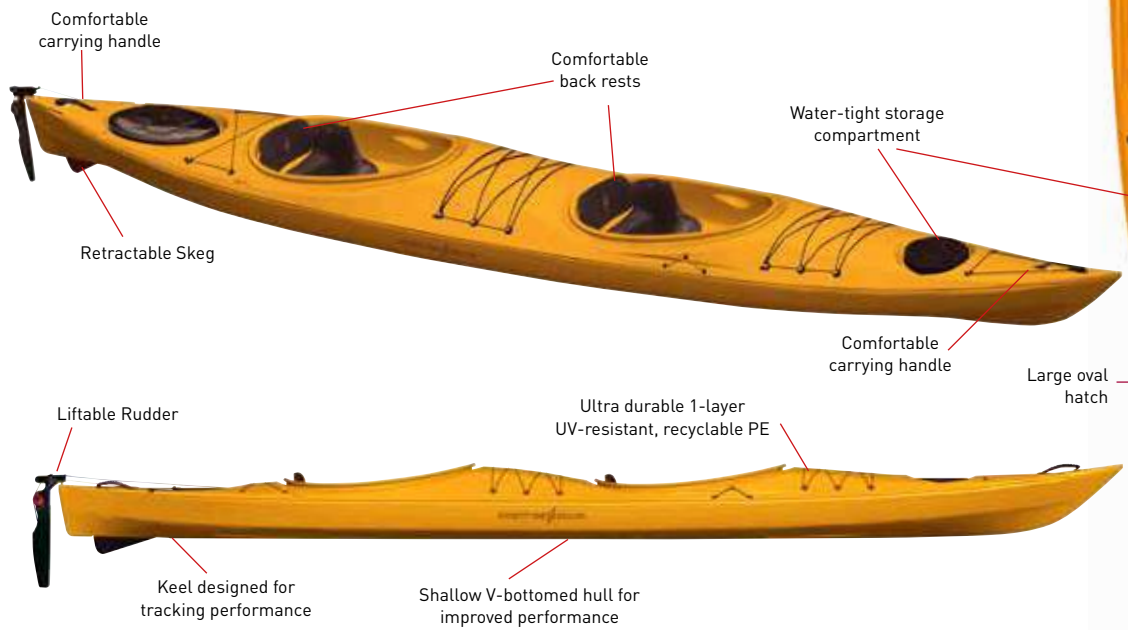
Orange - PSF000156021805



Easy to adjust
Foot rests

Bungees on front
and aft
deck

Easy to adjust
Rudder
pedals



POINT 65°N S W E D E N

POINT 65 SPRAY DECKS & TRANSPORT DECKS

- ◆ Point 65 offers 2 styles of decks ranging from the simple tough nylon deck "Storm" to an even tougher deck "Ocean" with straps and reinforcement.

Storm

Medium - PSF000301020103
(only fits Whisky)

XL - PSF000301020104



Ocean Spray

XL - PSF000312010104



PADDLE LEASH COIL



SNAP-TAP RATCHET STRAP

- ◆ Pair
- PSF000011100102



SNAP-TAP BUCKLE

- ◆ Pair
- PSF000011100103



KAYAK PADDLE

- ◆ Two part - clip apart
 - ◆ Child - Black: 160cm
 - ◆ Adult - Yellow / Black: 220cm
- FLX3SFPD35 - Child FLX3SFPD206 - Adult





TOP
SELLER

Replaces the
FRENZY

MALIBU 9.5

- ◆ Adjustable and comfortable seat
- ◆ Splash-resistant QuickStash™ storage
- ◆ Bow retention bungee
- ◆ Stackable design
- ◆ Molded-in foot wells for added leg support
- ◆ Molded-in cup holders, paddle rests and side handles

Specifications

Length	9' 5" / 2.9 m
Width	33" / 83.8 cm
Weight	44 lbs / 20 kg
Max Cap.	325 lbs / 147.4 kg

SUNRISE **SEAGLASS** **AHI**
JW0760110107 JW0760110105 JW0760110101



Replaces the
SCRAMBLER

MALIBU 11.5

- ◆ Adjustable and comfortable seat
- ◆ Splash-resistant QuickStash™ storage
- ◆ Bow retention bungee
- ◆ Stackable design
- ◆ Molded-in foot wells for added leg support
- ◆ Molded-in cup holders and paddle rests
- ◆ Molded-in side handles

Specifications

Length	11' 5" / 3.48 m
Width	31" / 78.74 cm
Weight	59 lbs / 26.76 kg
Max Cap.	360 lbs / 163.29 kg

SUNRISE **SEAGLASS**
JW0760120107 JW0760120105



TOP
SELLER

MALIBU TWO

- ◆ Two Comfort Plus fully adjustable seat
- ◆ Seat can be quickly removed
- ◆ Side-mounted carry handles
- ◆ Bow/stern toggle handles
- ◆ Screw-in drain plug
- ◆ Three molded-in seat wells
- ◆ Gear straps
- ◆ Patented overlapping foot wells
- ◆ Molded-in handles, skid plate.

Specifications

Length	12' / 3.7 m
Width	34" / 86.4 cm
Weight	57 lbs / 25.9 kg
Max Cap.	425 lbs / 192.8 kg

SUNRISE **SEAGLASS** **AHI**
JW0760101040 JW0760101128 JW0760101130



MALIBU TWO XL

- ◆ Two Comfort Plus seat backs
- ◆ Tank well with bungee
- ◆ Molded-in cup holder
- ◆ Paddle keeper
- ◆ Side-mounted carrying handles
- ◆ Bow/stern toggle handles
- ◆ Screw-in drain plug

Specifications

Length	13' 4" / 4.1 m
Width	34" / 86.4 cm
Weight	68 lbs / 30.8 kg
Max Cap.	500 lbs / 226.8 kg

SUNRISE **SEAGLASS** **AHI**
JW0762903030 JW0762903032 JW0762903034

PDL DRIVE

- ◆ This revolutionary pedal drive hits an impressive 5.5mph with a 10:1 gear ratio for efficient pedalling. It mounts into the Topwater PDL in seconds and in shallow water it can tip up its patented docking station in an instant. Plus, it's backed by an industry leading 4 year warranty



MALIBU PEDAL

- ◆ PDL Drive System with splash-resistant storage
- ◆ Slide track adjustable seating
- ◆ Element Beach Seat (EBS) with mesh storage pocket
- ◆ Click seal hatch (under seat)
- ◆ Pet-friendly bow tank well with bungees
- ◆ Three cup holders
- ◆ Stern tank well jumpseat
- ◆ Bow and stern carrying handles
- ◆ 8-inch accessory tracks

Specifications

Length	12' / 3.66 m
Width	34.5" / 87.6 cm
Weight	100 lbs / 45.4 kg
Max Cap.	450 lbs / 204.1 kg

SEAGLASS
JW0760151002



PROWLER 13 ANGLER

- ◆ This popular angler kayak combines performance with all of the features every angler needs.
- ◆ Comfort Plus seat, molded-in seat well, flush mount rod holders, large bow hatch, click seal bow hatch, oversized tank well with bungee, deck bungee, transducer compatible scupper, molded-in cup holder, molded-in handles, skid plate.
- ◆ Optional rudder system

Specifications

Length	13' 4" / 4.1 m
Width	28" / 71.1 cm
Weight	56 lbs / 25.4 kg
Max Cap.	181.4 - 204kg



JW0763801132



JW0763801128



JW0763801130



TRIDENT 13 ANGLER

- ◆ ACSII seat*
- ◆ Gunnel accessory tracks
- ◆ Oversized tank well with bungee and cooler option
- ◆ Click seal bow hatch
- ◆ Battery storage bag in bow hatch
- ◆ Mod Pod II™ with storage tray**
- ◆ Accessory plate with transducer compatible scupper
- ◆ Support track foot brace system
- ◆ Paddle holder with rod rest
- ◆ Reflective deck rigging
- ◆ Two flush-mounted rod holders
- ◆ Side-mounted carrying handles
- ◆ Skid plate
- ◆ Rudder ready
- ◆ Options - rudder system

Specifications

Length	13' 6" / 4.1 m
Width	29" / 73.7 cm
Weight	79 lbs / 35.8 kg
Max Cap.	355 lbs / 161 kg

*ACSII™ Seat

An ergonomically-designed backrest, quick-dry mesh fabric, and adjustable thigh and leg support make the ACSII Seat one of our most comfortable seats on the water.

**Mod Pod II

This unique center hatch provides easy access to your fishing rods as well as your gear with a magnet and sliding tackle storage trays. There's even a cell phone case!



JW0764451130



JW0764451128



PREDATOR 13

- ◆ Performance crafted tri-hull
- ◆ Slip resistant exo-ridge deck
- ◆ Scupper holes
- ◆ 6 removable mounting plates
- ◆ Rod tip holders and rod retainer bungees
- ◆ Exo-ridge tank well
- ◆ Molded paddle rest
- ◆ Large bow hatch with click seal cover
- ◆ Dual tackle holders
- ◆ Center console with mod pod cover

Specifications

Length	13' 2" / 4.13 m
Width	33.5" / 73.7 cm
Weight	86 lbs / 35.8 kg
Max Cap.	400 lbs / 161 kg



JW0164850135



TOPWATER 106, 120 & PDL

- ◆ The all-new Topwater 106 offers large fishing kayak performance, in a compact, nimble package. A marriage of stability and performance, the Topwater, with the all-new ultra-stable DoubleU™ hull, quietly glides through any water condition while providing a stable, comfortable stand-up fishing platform. Equipped with thoughtful on-board tackle and rod management and a revolutionary universal transducer mount, even the saltiest of anglers will be impressed by the overall fishability of the new Topwater series. Old Town sacrificed nothing, delivering a series of innovative fishing kayaks that are easy to maneuver and even easier to transport all while boasting an impressive maximum capacity.
- ◆ EVA foam deck pads
- ◆ ElementAir Seat™
- ◆ Rudder control knob for steering
- ◆ Flush mount rod holders
- ◆ Quick seal hatch
- ◆ Onboard rod and tackle storage
- ◆ Universal transducer mounting system

TOPWATER PDL (additional features)

- ◆ Maintenance-free, award-winning, forward/reverse PDL™ drive with a patent-pending easy-docking system and best-in-class 4 year warranty.
- ◆ An oversized stern tank well coupled with impressive hull capacity, provides one of the roomiest fishing kayaks on the market.
- ◆ Stay organized and easily access gear with two multi-position rod holders and thoughtfully-placed onboard rod and tackle storage.
- ◆ PDL drive



Topwater 106

Topwater 120

Topwater PDL

106 - Specifications

Material	Single Layer Polyethylene
Seat Type	Element Air Seating
Weight Capacity	440 lb / 199.6 kg
Length	10' 6" / 3.2 m
Width	34.5" / 87.6 cm
Weight	73 lb / 33.1 kg



PHOTIC
JW0140600101



FIRSTLIGHT
JW0140600103



BOREAL
JW0140600105



120 - Specifications

Material	Single Layer Polyethylene
Seat Type	Element Air Seating
Weight Capacity	500 lb / 226.8 kg
Length	12' / 3.7 m
Width	33.5" / 85.1 cm
Weight	82 lb / 37.2 kg



PHOTIC
JW0140610101



FIRSTLIGHT
JW0140610103



BOREAL
JW0140610105



PDL - Specifications

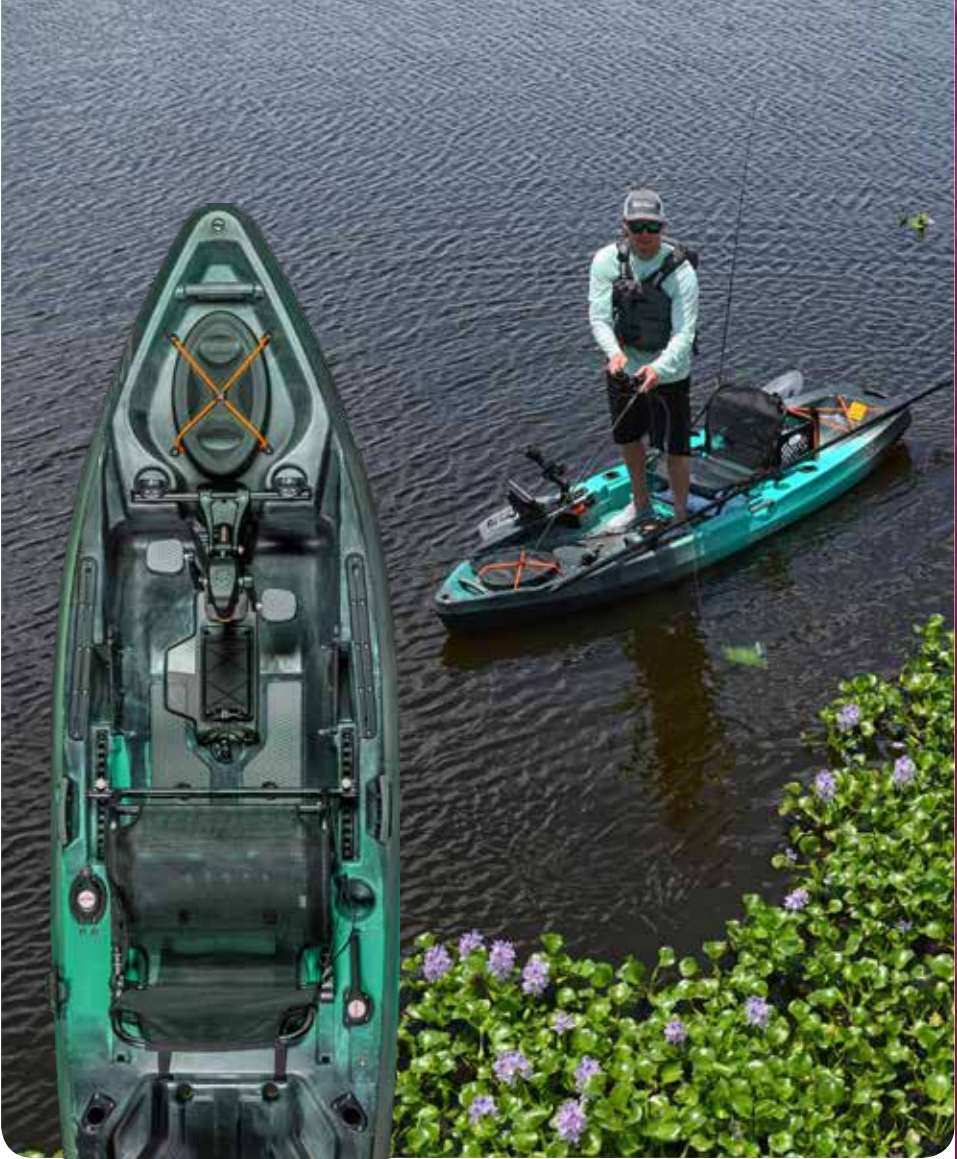
Material	Single Layer Polyethylene
Seat Type	Element Air Seating
Weight Capacity	450 lb / 204.1 kg
Length	10' 6" / 3.2 m
Width	36" / 91.4 cm
Weight	95 lb / 43 kg



PHOTIC
JW0140620101



FIRSTLIGHT
JW0140620102



PDL DRIVE

- ◆ This revolutionary pedal drive hits an impressive 5.5mph with a 10:1 gear ratio for efficient pedalling. It mounts into the Topwater PDL in seconds and in shallow water it can tip up its patented docking station in an instant. Plus, its backed by an industry leading 4 year warranty



DISCOVERY 119

- ◆ Compact and fun to paddle, the Discovery 119 has been a long time favorite. Like the others in the series, this solo canoe is agile, stable and easy to handle. It's even well-suited for a double-bladed paddle. And thanks to our construction process, it's tough without being too heavy. Let the Discovery 119 help you explore new territory.
- ◆ Comfortable and durable nylon web seats
- ◆ Designed for solo paddling and well-suited for a double-bladed paddle
- ◆ Vinyl gunwales, ash thwarts
- ◆ Comfortable carrying handles
- ◆ Extremely durable three layer polyethylene

Red - JW0130010122
Green - JW0130010120

Specifications

Activity	Recreation, Fishing, Hunting
Number of Paddlers	2
Material	Three Layer Polyethylene
Length	15' 8" / 4.8 m
Width	35.5" / 90.2 cm
Width at 4" Waterline	35.5" / 90.2 cm
Bow Height	21.5" / 54.6 cm
Depth	13.5" / 34.3 cm
Weight	49 lbs / 22kg
Weight Capacity	1150 lb / 521.6 kg



DISCOVERY 158

- ◆ For over 30 years the Discovery 158 has been one of our best selling canoes. If you're looking for a tough and rugged canoe, the Discovery 158 is it! Our 3 layer construction is designed to take a beating. But, the Discovery 158 is also designed to perform well on the water. Agile, stable and easy to handle, the Discovery 158 is a nice choice for the outdoor enthusiast.
- ◆ Comfortable and durable nylon web seats
- ◆ Ash carrying yoke and thwart
- ◆ Vinyl gunwales
- ◆ Comfortable carrying handles
- ◆ Extremely durable three layer polyethylene

Red - JW0130050162
Green - JW0130050160

Specifications

Activity	Recreation, Fishing, Hunting
Number of Paddlers	2
Material	Three Layer Polyethylene
Length	15' 8" / 4.8 m
Width	35.5" / 90.2 cm
Width at 4" Waterline	35.5" / 90.2 cm
Bow Height	21.5" / 54.6 cm
Depth	13.5" / 34.3 cm
Weight	87lbs / 39kg
Weight Capacity	1150 lb / 521.6 kg



DISCOVERY 158 - OUTFITTER



- ◆ For over 30 years the Discovery 158 has been one of our best selling canoes. If you're looking for a tough and rugged canoe, the Discovery 158 is it! Our 3 layer construction is designed to take a beating. But, the Discovery 158 is also designed to perform well on the water. Agile, stable and easy to handle, the Discovery 158 is a nice choice for the outdoor enthusiast.
- ◆ Comfortable and durable nylon web seats
- ◆ Ash carrying yoke and thwart
- ◆ Vinyl gunwales
- ◆ Comfortable carrying handles
- ◆ Extremely durable three layer polyethylene

Specifications

Activity	Recreation, Fishing, Hunting
Number of Paddlers	2
Material	Three Layer Polyethylene
Length	15' 8" / 4.8 m
Width	35.5 in / 90.2 cm
Width at 4" Waterline	35.5 in / 90.2 cm
Bow Height	21.5 in / 54.6 cm
Depth	13.5 in / 34.3 cm
Weight	87lbs / 39kg
Weight Capacity	1150 lb / 521.6 kg

Red - JW0130050172
Green - JW0130050170
Optional back rest - JW0113311250



DISCOVERY 169

- ◆ At nearly 17 feet, the Discovery 169 is the longest in the Discovery series. Designed to go long distances, the Discovery 169 performs efficiently even when it is loaded with gear. The 3 layer construction is designed to take a beating. The Discovery 169 is a great choice for the recreational paddlers who may aspire to go longer distances or may need additional room and load capacity.
- ◆ Comfortable and durable nylon web seats
- ◆ Ash carrying yoke and thwart
- ◆ Vinyl gunwales
- ◆ Comfortable carrying handles
- ◆ Extremely durable three layer polyethylene

Specifications

Activity	Recreation, Fishing, Hunting
Number of Paddlers	2
Material	Three Layer Polyethylene
Length	16' 9" / 5.1 m
Width	37 in / 94 cm
Width at 4" Waterline	35 in / 88.9 cm
Bow Height	23 in / 58.4 cm
Depth	15 in / 38.1 cm
Weight	91lbs / 41kg
Weight Capacity	1400 lb / 635 kg

Red - JW0130080162
Green - JW0130080160



DISCOVERY 169 - OUTFITTER

- ◆ At nearly 17 feet, the Discovery 169 is the longest in the Discovery series. Designed to go long distances, the Discovery 169 performs efficiently even when it is loaded with gear. The three layer construction is designed to take a beating. The Discovery 169 is a great choice for the recreational paddlers who may aspire to go longer distances or may need additional room and load capacity.
- ◆ Comfortable and durable nylon web seats
- ◆ Ash carrying yoke and thwart
- ◆ Vinyl gunwales
- ◆ Comfortable carrying handles
- ◆ Extremely durable three layer polyethylene

Specifications

Activity	Recreation, Fishing, Hunting
Number of Paddlers	2
Material	Three Layer Polyethylene
Length	16' 9" / 5.1 m
Width	37" / 94 cm
Width at 4" Waterline	35" / 88.9 cm
Bow Height	23" / 58.4 cm
Depth	15" / 38.1 cm
Weight	91lbs / 41kg
Weight Capacity	1400 lb / 635 kg

Red - JW0130080172
Green - JW0130080170
Optional back rest - JW0113311250



DAY TRIPPER

- ◆ Tried and true the Day Tripper is one of our most popular paddles. A lightweight anodized aluminum shaft is ovalized for easy gripping. This is the paddle of choice for beginners, or for use as a backup. A push-button takedown allows blades to be feathered at 60° or inline, for right- and left-hand control. Also available in a 1-piece paddle option.

Specifications

Material	
Blade	Glass Reinforced Polypropylene
Shaft	Anodised Aluminium
Length	1 Piece - 220cm
Length	2 Piece - 220cm
Weight	37oz

1 Piece - JW0113325779
2 Piece - JW0125570820



MAGIC MYSTIC

- ◆ Durable aluminum shaft makes the Magic Mystic a reliable introductory paddle. Fiberglass reinforced polypropylene blades are efficiently designed to offer impressive power when on the water.

Specifications

Material	
Blade	Glass Reinforced Polypropylene
Shaft	Anodised Aluminium
Ferrules	Fibreglass
Length	220cm
Weight	39.5oz

Limon - JW0125093870



VALUE CANOE PADDLE

- ◆ The Value Canoe Paddle has a durable aluminum shaft and a polyethylene blade with T-grip.
- ◆ A great paddle for beginners or for use as a spare.
- ◆ Length: 54"

JW0113322601



ECONOMY

- ◆ Lightweight and durable, this is the perfect all-purpose paddle. An 8" x 20" blade adds power to your stroke. Blade and T-grip are molded of high impact polypropylene.

Length 48" - JW0113322555 Length 54" - JW0113322552 Length 57" - JW0113322553 Length 60" - JW0113322554



STANDARD

- ◆ The industry standard for strength and durability. A fully clad aluminum shaft provides power and reduces maintenance.

Black / Black Length 57" - JW0125158830 Length 60" - JW0125158840 Yellow / Blue Length 54" - JW0113322900 Length 57" - JW0113322901

COMFORT TECH SEAT

- ◆ Each
- JW0720000572



COMFORT BACKREST

- ◆ Each
- JW0710140000



COMFORT PLUS SEAT BACK

- ◆ Each
- JW0720000238



COMFORT PRO BACKREST

- ◆ Brass clips attach to existing strap eyes on kayak
- ◆ Waffled seat pad for a drier more comfortable ride
- ◆ Triglides system to adjust angle of pull
- ◆ Ladderlock system adjusts level of support
- ◆ Each

JW0710160000



SEAT, SNAP-IN CENTER

- ◆ Each
- JW0113311451



FENDER WASHER

- ◆ For thwart 32.5"
- ◆ Each
- JW0113150419



OCEAN KAYAK HANDLES

- ◆ Pair
- JW0717800000



DRAIN PLUG FINE THREAD

- ◆ Each
- JW0113150521



DRAIN PLUG ACCESSORY

- ◆ Each
- JW0730310000



SCUPPER STOPPERS

- ◆ Packs of 2
- JW0719600000 - Small
- JW0719620000 - Medium
- JW0719640000 - Large



SCUPPER VALVES

- JW0720000582 - Medium - Pack 2
- JW0720000583 - Medium - Pack 30



TOGGLE HANDLE KIT

- ◆ Each
- JW0730320000



CARRY HANDLES

- ◆ For Ocean Kayak models
- ◆ Each

JW0720000628 - Top Piece
JW0720000630 - Bottom Piece

JW0720000628



JW0720000630

RUDDER KIT

- ◆ Universal kit - Trident (up to 2017), Prowler, Big Game
- ◆ Trident 11, 13 & 15 (2017 > on)

JW0732530000

JW0732570000



DISCOVERY 158 DECK PLATE

- ◆ Each
- JW0113150523



SEAT, CANOE BLOW MOLD BOW

- ◆ Each
- JW0113152566



SEAT, CANOE BLOW MOLD STERN

- ◆ Each
- JW0113152567



SKID PLATE FELT

- ◆ Each
- JW0113310645



BONDAGLASS RESIN

- ◆ 2 part resin to be used for skid plate felt

- Q005154 - 250g
- Q005155 - 500g
- Q005156 - 1kg



Ruk Sport



RECREATIONAL LIGHT WEIGHT PADDLE

- ◆ Floats
- ◆ Poly propylene blades on aluminium shaft
- ◆ Fitted with drip rings Length 215cm
- ◆ Black anodised shaft
- ◆ Black blades

RUKP009BA



90CM CANADIAN CANOE AIR BAG

- ◆ Durable hard wearing plastic lined nylon.
- ◆ Twist valve
- ◆ Colour: blue
- ◆ Supplied in singles
- ◆ Offered for point of sale in attractive net bags with hanging card

RUKBB004 - Supplied as singles



BUOYANCY FOAM WEDGE FOR OPEN CANOES

- ◆ Tough hard wearing vinyl with polystyrene block
- ◆ Front and back
- ◆ Mesh net for storage on front
- ◆ Central securing strap for use with D rings
- ◆ Sold in pairs

RUKBLH001



FOAM WEDGE FITTING KIT

- ◆ Offered in blister packs
- ◆ This is a double pack to fit 2 foam blocks
- ◆ Includes: Bungee Cord, Cord Mounting Ends, Nylon Pad Eyes, Sealing Pop Rivets

RUKABFK

TROLLEYS



- ◆ Purpose made trolleys made to a high standard utilising the best materials will gives many years of service
- ◆ This sit on top trolley has been carefully designed to make efficient work of moving your boat
- ◆ Now with PU tubeless tyres for minimal maintenance
- ◆ Easy adjustable upright arms with a cam clamping system
- ◆ Carrying capacity: 40kg
- ◆ Finished in black chrome powder coating

RUKT001



- ◆ Purpose made aluminium folding trolley manufactured to a high standard utilising the best materials and will give many years of reliable service
- ◆ Designed to take make efficient work of moving your boat
- ◆ Carrying capacity: 60 kgs
- ◆ Now with PU tubeless tyres to eliminate getting punctures
- ◆ Finished in black chrome powder coating
- ◆ Offered in attractive point of sale boxes

RUKT002



UNIQUE BOAT STORAGE RACKING SYSTEM

- ◆ For six boats
- ◆ Mounted on wheels for easily moving around
- ◆ Easily assembled with compression joints
- ◆ Full assembly instructions easily followed
- ◆ Finished in black chrome powder cating
- ◆ Note: if used outside in windy conditions the racks may need extra ballast to give extra stability

RUKKR023



RACK STRAPS

- ◆ 25mm x 3.68m high quality roof rack tie down straps
- ◆ Heavy duty die-cast cam buckle with protection
- ◆ Sold in pairs - loose

RUKS001L



5M ROOF RACK STRAPS

- ◆ 25mm x 5m
- ◆ Heavy duty die-cast cam buckle with protection
- ◆ Offered for point of sale in a plastic bag with a hanging card
- ◆ Sold in pairs

RUKS002L



DRAIN PLUG WITH GASKET

- ◆ Offered in blister packs
- ◆ Retro fit drain plug with mount

RUKS3



SCUPPER STOPPERS.

- ◆ Colour: black
- ◆ Sold in pairs
- ◆ Supplied in packaging for point of sale displays
- ◆ Blister packs

RUKS003B - Small

RUKS002B - Medium

RUKS001B - Large (fits Mailbu range)

HELMETS



- ◆ CE approved.
- ◆ Ear protection.
- ◆ Rear wheel adjuster allows for quick and easy fitting.
- ◆ Comfy inner foam shell.
- ◆ Sizes available in:
Small/Medium 51-56cm
Medium/Large 53-59cm
- ◆ Colours: Black, Red, Yellow

RUKRHBKS - Black Small/Medium

RUKRHRDS - Red Small/Medium

RUKRHYES - Yellow Small/Medium

RUKRHBKM - Black Medium/Large

RUKRHRDM - Red Medium/Large

RUKRHYEM - Yellow Medium/Large



COILED STYLED LEASH

- ◆ 1.5 metre allows unrestricted movement
- ◆ Can be used for paddles, rods, nets and items that need to be secured while in the boat
- ◆ Velcro to paddle, plastic clip to boat
- ◆ Colour: black
- ◆ Blister pack

RUKL002B



MANUAL BILGE PUMP

- ◆ Comfortable, ergonomically shaped T-grip handle
- ◆ High-density foam sleeve for assure flotation
- ◆ Steel piston rod
- ◆ Eyelet for tying pump to kayak
- ◆ Yellow for high visibility

RUKBPUMP

OVERBOARD

DRY POUCH

- ◆ Capacity: 1Ltr

- Blue - OB1031B
- Red - OB1031R
- Black - OB1031BLK
- Yellow - OB1031Y



TOP
SELLER



KAYAK DECK BAG YELLOW

- ◆ Capacity: 20Ltr
- ◆ Dimensions: H43 x D14cm x W30cm

- Yellow - OB1094Y



WATERPROOF PRO VHF CASE

- ◆ Dimensions:
H13 x W9cm

- Black - OB1188BLK



WATERPROOF MAP/DOCUMENT POUCH

- ◆ A4 Dimensions: H: 29.7cm x W: 21.6cm
- ◆ A3 Dimensions: H: 43.2cm x W: 29.7cm

- A4: Black - OB1081BLK
- A3: Black - OB1105BLK



WATERPROOF PHONE CASES

- ◆ Large Dimensions:
H: 17cm x W: 9cm
- ◆ Small Dimensions: H:
15cm x W: 7.5cm

- Large: Black - OB1106BLK
- Small: Black - OB1008BLK
- Small: Aqua - OB1008A



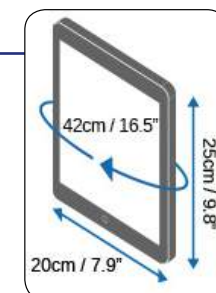
TOP
SELLER



WATERPROOF TABLET CASES

- ◆ With shoulder strap
- ◆ Compatible with iPad (all models including Air), Samsung Galaxy Tab 2 10.1, Kindle Fire HD 8.9 and any other similar size device

- Black - OB1086BLK



OVERBOARD®

WATERPROOF BELT PACK

- ◆ Dimensions: H: 17cm x W: 9cm
- Black - **OB1050BLK**



WATERPROOF ARM PACK

- ◆ Dimensions: H: 15cm x W: 7.9cm
- Black - **OB1051BLK**



WATERPROOF MULTIPURPOSE CASE

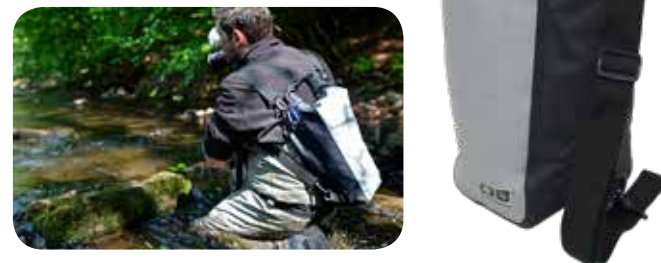
- ◆ Frosted
- ◆ Med Dimensions: H: 17cm x W: 9cm, Circ: 20cm
- ◆ Small Dimensions: H: 13.5cm x W: 7.5cm, Circ: 15cm

Medium - **OB1066F**
Small - **OB1067F**



WATERPROOF PRO-SPORT SLR ROLL TOP CAMERA BAG

- ◆ Dimensions: H: 38cm x W: 20cm
- Black - **OB1104BLK**



WATERPROOF SLR ROLL TOP CAMERA BAG

- ◆ Includes shoulder strap
- ◆ Dimensions: H: 22cm x W: 12cm
- Black - **OB1087BLK**



WATERPROOF 3 LITRE WAIST PACK

- ◆ Dimensions: H: 13cm x W: 20cm, D: 8cm
- Black - **OB1049BLK**
- Yellow - **OB1049Y**



WATERPROOF DRY FLAT BAG

- ◆ 5L - Dimensions: 23cm x 27cm
- Black - **OB1002BLK** ● Yellow - **OB1002Y**
- ◆ 15L - Dimensions: 35cm x 37cm
- Black - **OB1004BLK** ● Red - **OB1004R**
- ◆ 30L - Dimensions: 50cm x 27cm
- Black - **OB1026BLK** ● Blue - **OB1026B**



WATERPROOF DRY TUBE BAG



- ◆ 5L - Dimensions: 22cm x 18cm
- Black - **OB1001BLK** ● Red - **OB1001R**
- Yellow - **OB1001B** ● White - **OB1001WHT**
- Pink - **OB1001P** ● Yellow - **OB1001Y**
- ◆ 12L - Dimensions: 45cm x 18cm
- Black - **OB1003BLK** ● Red - **OB1003R**
- Yellow - **OB1003B** ● White - **OB1003WHT**
- Yellow - **OB1003Y**
- ◆ 20L - Dimensions: 44cm x 25cm
- Black - **OB1005BLK** ● Red - **OB1005R**
- Yellow - **OB1005B** ● White - **OB1005WHT**
- Pink - **OB1005P** ● Yellow - **OB1005Y**
- ◆ 30L - Dimensions: 44cm x 29cm
- Black - **OB1006BLK** ● Red - **OB1006R**
- Yellow - **OB1006B** ● White - **OB1006WHT**
- Yellow - **OB1006Y**
- ◆ 40L - Dimensions: 55cm x 29cm
- Black - **OB1007BLK** ● Red - **OB1007R**
- Yellow - **OB1007B** ● White - **OB1007WHT**
- Yellow - **OB1007Y**



20L PRO VIS DRY TUBE

- ◆ Includes shoulder strap
- ◆ Dimensions: 44cm x 25cm
- Orange - **OB1148HVO**
- Yellow - **OB1148HVV**



WATERPROOF DRY TUBE BAG

- ◆ Dimensions: 5L - H: 22cm x D18cm
- 12L - H: 45cm x D18cm
- 20L - H: 44cm x D25cm

5L - **OB1174CLR**
12L - **OB1175CLR**
20L - **OB1176CLR**



BACK PACK DRY TUBE

- ◆ 60L - Dimensions: 70cm x 33cm
- Black - **OB1055BLK**



PRO LIGHT BACK PACK

- ◆ 20L - Dimensions: H: 44cm x W: 24cm x D19cm
- Black - **OB1135BLK**
- ◆ 30L - Dimensions: H: 46cm x W: 28cm x D29cm
- Black - **OB1136BLK**



OVERBOARD®

PRO-SPORTS BACKPACKS

- ◆ 20L - W44 x H24 x D19cm
- Blue - **OB1145B** ● Yellow - **OB1145Y**
- ◆ 30L - W46 x H26 x D24cm
- Black - **OB1146BLK** ● Red - **OB1146R**



WATERPROOF LAPTOP TIDY

- ◆ Compatible with all OverBoard 12, 20, 30 + 45 Litre Backpacks
- ◆ Easily organise your everyday essentials
- ◆ 14" widescreen padded laptop compartment
- ◆ Tablet, phone and accessory pockets
- ◆ W37cm x H26.5 x D4cm
- Grey - **OB1181GRY**



PRO-VIS BACKPACK S

- ◆ 20L - H44 x W24 x D19cm
- Orange - **OB1157HVO** ● Yellow - **OB1157HVV**
- ◆ 30L - H46 x W28 x D24cm
- Orange - **OB1147HVO** ● Yellow - **OB1147HVV**



CLASSIC DUFFEL BAG

- ◆ 40L - H24 x W52 x D32cm
- Black - **OB1150BLK** ● Yellow - **OB1150Y**
- ◆ 60L - H28 x W67 x D32cm
- Black - **OB1151BLK** ● Yellow - **OB1151Y**
- ◆ 130L - H34 x W87 x D43cm
- Black - **OB1152BLK**



PRO-SPORTS DUFFEL BAG

- ◆ D-zip with weatherproof zipper flap - Class 1 - IP64
- ◆ Manufactured from strong & hard-wearing PVC with double stitching
- ◆ Protects contents from dust, sand, dirt and water
- ◆ Tough and durable base
- ◆ Lockable zips
- ◆ Internal side mesh zip pocket
- ◆ Internal wet / dry pocket
- ◆ 4 compression straps
- ◆ Twin haul handles on ends
- ◆ Padded top carry handle
- ◆ ID pocket on top
- ◆ 60L - H28 x W67 x D32cm
- Black - **OB1154BLK** ● Red - **OB1154R**
- ◆ 90L - H31 x W78 x D41cm
- Black - **OB1155BLK**



PRO-VIS DUFFEL BAG

- ◆ 100% waterproof holdall with Fold Seal System™ - Class 3 - IP66
- ◆ Waterproof front zip pocket - Class 2 - IP65
- ◆ High visibility PVC so can be seen day or night
- ◆ Quick release loop for quick access to the compartment
- ◆ High frequency welded seams
- ◆ 2 x end haul handles
- ◆ 2 x front and 2 x back light reflective strips
- ◆ Top carry handle with hook-and-loop fasteners
- ◆ Protects contents from dust, sand, dirt and water
- ◆ D-rings for multiple attachment options
- ◆ Emergency front whistle buckle
- ◆ 4 x heavy duty attachment loops
- ◆ Internal wet / dry pocket
- ◆ Internal side mesh zip pockets
- ◆ Super durable base
- ◆ Padded shoulder strap
- ◆ Heavy duty and durable materials for rough usage
- ◆ LED light attachment loops
- ◆ 60L - H28 x W67 x D32cm
- Orange - **OB1149HVO** ● Yellow - **OB1149HVV**



OVERBOARD®

ADVENTURE DUFFEL BAG

- ◆ D-zip with weatherproof zipper flap - Class 1 - IP64
- ◆ Manufactured from strong & hard-wearing PVC with double stitching
- ◆ Protects contents from dust, sand, dirt and water
- ◆ Tough and durable base
- ◆ Lockable zips
- ◆ Internal side mesh zip pocket
- ◆ Internal wet / dry pocket
- ◆ 4 compression straps
- ◆ Twin haul handles on ends
- ◆ Padded top carry handle
- ◆ ID pocket on top

◆ 35L - H27 x W50 x D27cm

● Black - **OB1091BLK** ○ White - **OB1091WHT**

◆ 60L - H30 x W60 x D34cm

● Black - **OB1143BLK** ○ White - **OB1143WHT**

◆ 90L - H30 x W75 x D40cm

● Black - **OB1059BLK** ○ White - **OB1059WHT**

● Blue - **OB1059B** ● Yellow - **OB1059Y**



TREKDRY BACKPACKS

- ◆ IP67 Class 4 rated 100% waterproof backpack. Submersible to depths of up to 1m/3ft for 30 minutes.
- ◆ Double laminated reinforced PVC tarpaulin with high frequency welded seams.
- ◆ Removable padded hip belt with quick access pockets.
- ◆ Ergonomic padded back panel with lumbar support. Adjustable sternum strap with whistle buckle.

20 Litre - **OB1204G**

30 Litre - **OB1205G**

90 Litre - **OB1203G**



DRY ICE COOLER BAG

- ◆ Insulating foam core to keep drinks cold for up to 24 hours
- ◆ Air valve for flat pack storage and to increase insulation
- ◆ Floats when correctly sealed even when fully packed
- ◆ Easy to clean multilayered tough PVC tarpaulin
- ◆ Simple roll-top sealing system
- ◆ 100% waterproof insulated dry bag
- ◆ No zips to jam or break
- ◆ HF welded seams

15L - Grey - **OBD001GRY**

15L - Turquoise - **OBD001T**

30L - Grey - **OBD002GRY**

30L - Turquoise - **OBD002T**



15
LITRES

H: 37cm / 14.5"
D: 22cm / 8.6"
Weight: 0.57kg

30
LITRES

H: 44cm / 17.3"
D: 29cm / 11.4"
Weight: 0.79kg



DRY ICE COOLER BACK PACK

- ◆ Insulating foam core to keep drinks cold for up to 24 hours
- ◆ Air valve for flat pack storage and to increase insulation
- ◆ Floats when correctly sealed even when fully packed
- ◆ Easy to clean multilayered tough PVC tarpaulin
- ◆ Simple roll-top sealing system
- ◆ 100% waterproof insulated dry bag
- ◆ No zips to jam or break
- ◆ HF welded seams

40L - Grey - **OBD004GRY**

40L - Turquoise - **OBD004T**



40
LITRES

H: 56cm / 22"
D: 30cm / 11.8"
Weight: 1.28kg

SPORTS BAGS - SMALL

♦ Small - 50 x 20 x 25cm - 25L

Black - **BMZ4991**

Orange - **BMZ4201**

White - **BMZ4011**

SPORTS BAGS - MEDIUM

♦ Medium - 62 x 28 x 25cm - 35L

Black - **BMZ4992**

Orange - **BMZ4202**

White - **BMZ4012**

CREW BAGS - MEDIUM

♦ Medium - 65 x 20 x 25cm - 26L

Black - **BMZ5992**

White - **BMZ5012**

Orange - **BMZ5205**

CREW BAGS - LARGE

♦ Large - 72 x 30 x 30cm - 65L

Black - **BMZ5993**

White - **BMZ5013**

Orange - **BMZ5203**

HOLDALLS - SMALL

♦ Small - 50 x 20 x 25cm - 25L



HOLDALLS - MEDIUM

♦ Medium - 62 x 28 x 25cm - 35L



DUFFEL BAGS - SMALL

♦ Small - 65 x 20 x 25cm - 26L



DUFFEL BAGS - MEDIUM

♦ Medium - 72 x 30 x 30cm - 65L





E-Z OUT RESCUE KNIFE 89MM

- ◆ Textured handle with SoftGrip
- ◆ One-hand opening
- ◆ Full serration with blunt tip
- ◆ Overall Length: 7.91", Blade Length: 3.51", Closed Length: 4.51", Weight: 2.6 oz.
- ◆ Lock back
- ◆ Blade style: clip point
- ◆ Blade material: high carbon stainless
- ◆ Blade type: full serration
- ◆ Handle: glass-filled nylon with softgrip inserts
- ◆ Opening style: one-handed opening

Box packed - **GE06971**



PARAFRAME MINI FOLDING KNIFE SERRATED

- ◆ Frame lock handle design
- ◆ Lightweight open stainless steel handles
- ◆ Sturdy pocket clip
- ◆ Overall Length: 6", Blade Length: 2.22", Closed Length: 3.07", Weight: 1.4 oz.
- ◆ Lock mechanism: frame-lock
- ◆ Blade style: clip point
- ◆ Blade material: high carbon stainless
- ◆ Blade type: serrated
- ◆ Handle material: stainless steel
- ◆ Opening style: one-handed opening

Blister packed - **GE48484**



PARAFRAME MINI FOLDING KNIFE FINE

- ◆ Frame lock handle design
- ◆ Lightweight open Sstainless steel handles
- ◆ Sturdy pocket clip
- ◆ Overall Length: 6", Blade Length: 2.22", Closed Length: 3.07", Weight: 1.4 oz.
- ◆ Lock mechanism: frame-lock
- ◆ Blade style: clip point
- ◆ Blade material: high carbon stainless
- ◆ Blade type: fine
- ◆ Handle material: stainless steel
- ◆ Opening style: one-handed opening

Blister packed - **GE48485**



PARAFRAME I FOLDING KNIFE SERRATED

- ◆ Frame lock handle design
- ◆ Lightweight open stainless steel handles
- ◆ Sturdy pocket clip
- ◆ Overall Length: 7.01", Blade Length: 3.01", Closed Length: 4.11", Weight: 2.6 oz.
- ◆ Lock mechanism: frame-lock
- ◆ Blade style: clip point
- ◆ Blade material: high carbon stainless
- ◆ Blade type: serrated
- ◆ Handle material: stainless steel
- ◆ Opening style: one-handed opening

Blister packed - **GE48443**



PARAFRAME II FOLDING SERRATED KNIFE

- ◆ Frame lock handle design
- ◆ Lightweight open frame stainless steel handle
- ◆ Sturdy pocket clip - for convenient pocket carry
- ◆ Overall length: 8.2", Blade Length: 3.5", Closed length: 4.8", Weight: 4.2oz
- ◆ One handed opening

Blister packed - **GE48447**



HINDERER RESCUE FOLDING SERRATED SHEATH KNIFE

- ◆ Lightweight
- ◆ Oversized thumb stud
- ◆ Window punch
- ◆ Oxygen tank valve opening
- ◆ Patented lock
- ◆ Safety hook cutter for clothing, webbing and seat belts
- ◆ High grade nylon sheath with protective insert
- ◆ Lanyard hole
- ◆ Overall length: 8.5", Length: 3.5", Closed length: 5.1, Weight: 5.6oz

Blister packed - **GE01534**



BEAR GRYLLS SCOUT KNIFE

- ◆ Thin and lightweight folding knife
- ◆ ½ Serrated high carbon stainless steel drop point blade - ideal for edge retention and cutting rope
- ◆ Dual-sided thumb stud - for easy single-hand opening
- ◆ Ergonomic textured rubber grip - maximizes comfort and reduces slippage
- ◆ Lock back - locks blade securely in place and maximizes safety during closing
- ◆ Clip for convenient pocket carry
- ◆ Priorities of survival - pocket guide contains bear's survival essentials
- ◆ Overall Length: 7.3", Closed Length: 4.0", Blade Length: 3.63", Weight: 2.4 oz.

Blister packed - **GE31000754**



STL 2.5 FOLDING KNIFE

- ◆ Fully machined stainless steel handle - thin handle with style and comfort
- ◆ Frame lock
- ◆ Full fine edge drop point blade
- ◆ Blade Length: 2.6", Open Length: 6.0", Closed Length: 3.4", Weight: 1.5 oz.

Blister packed - **GE31000716**





CRUCIAL MULTI-TOOL

- ◆ Features: needlenose pliers, regular pliers, pinch cut wire cutters, 1/2 fine blade and serrated (blunt tip for prying and scraping), phillips screwdriver, large flat screwdriver, bottle opener, carabiner clip, pocket clip
- ◆ Overall Length: 5.5", Closed Length: 3.6", Weight: 5 oz.
- ◆ Stainless Steel and Anodised Aluminium
- ◆ Blister Packed

Blue - **GE1019824**
Grey - **GE31001337**
Green - **GE31001339**



SPLICE POCKET TOOL IN BLACK

- ◆ Strong mini-scissors
- ◆ Keychain compatible
- ◆ Lightweight, strong
- ◆ Includes lifetime limited warranty
- ◆ Overall Length: 4", Closed Length: 2.4", Width Open: 3.5", Width Closed: 1", Blade Length: 1.5", Weight: 2.50 oz.
- ◆ Stainless steel - black

Blister packed - **GE1019241**



BEAR GRYLLS ULTIMATE MULTI TOOL

- ◆ Features: 12 stainless steel, weather-resistant components: needle nose pliers, fine edge knife, serrated knife, saw, phillips screwdriver, small flat driver, medium flat driver, lanyard ring, bottle opener, can opener, scissors, wire cutters
- ◆ Ergonomic textured rubber grip - maximizes comfort and reduces slippage
- ◆ Spring loaded jaw for simplified single-hand use
- ◆ External components for easy access
- ◆ Patented safe.T.Plus system - enhanced safety by locking components into usage position
- ◆ Nylon sheath - lightweight, military-grade, mildew resistant
- ◆ Includes land to air rescue instructions
- ◆ Priorities of survival - pocket guide contains bear's survival essentials
- ◆ Open Length: 6.3", Closed Length: 4.", Weight: 8.8 oz.

Blister packed - **GE31000749**



SUSPENSION MULTI TOOL

- ◆ Spring-loaded pliers
- ◆ Patented saf.T.Plus
- ◆ Open frame design
- ◆ Includes lifetime limited warranty
- ◆ Components: needlenose pliers, wire cutter, fine edge knife, serrated edge knife, saw, scissors, crosspoint screwdriver, small and medium, flatblade screwdrivers, can opener, bottle opener, lanyard hole
- ◆ Overall Length: 6", Closed Length: 3.5", Weight: 9oz.
- ◆ Handle material stainless steel
- ◆ Sheath material: ballistic nylon
- ◆ Pliers type: needlenose
- ◆ Handle color: titanium gray

Blister packed - **GE41471**

Box packed - **GE01471**

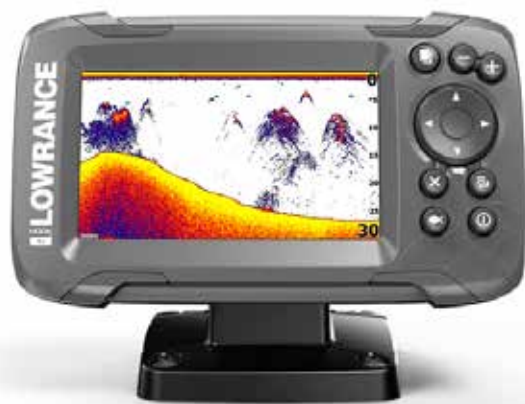


CENTRE DRIVE

- ◆ Features: needlenose pliers, regular pliers, magnetic 1/4" bit driver, fine edge blade, errated blade, cats paw pry bar, awl, rotatable carbide wire cutters, wire strippers, file, ruler (stamped into handle), phillips bit, flathead bit, bottle opener, dual-mount sheath, optional standard bit set

Box packed - **GE1025459**

LOWRANCE



HOOK 2 4X – FISH FINDER

- ◆ World's easiest fishfinder
- ◆ Automated sonar settings
- ◆ Easy to use menu operation and dedicated keypad
- ◆ Easy front-dash or quick-release bracket mounting installation display resolution: 480 x 272
- ◆ Display Ssize: 109mm
- ◆ Sonar Frequency: Wide angle 200 KHZ
- ◆ Sonar max depth: 152m

NC14013001



HOOK 2 5X - SPLIT SHOT

- ◆ Automated sonar settings
- ◆ Easy to use menu operation and dedicated keypad
- ◆ SplitShot 2-in-1 Sonar with wide angle 200KHz and DownScan imaging®
- ◆ Built-in GPS
- ◆ Easy front-dash or quick-release bracket mounting installation
- ◆ Display resolution: 800 x 480
- ◆ Display size: 127mm
- ◆ Sonar broadband max depth: 152m
- ◆ Sonar DownScan™ frequency: 455/800 KHZ

NC14016001



ELITE 5 TI

- ◆ Lowrance is announcing a NEW family of fishfinders/ chartplotters - The Elite-Ti series, featuring 7 and 5-inch touchscreen displays. The Elite-Ti series combines high-end features with powerful performance at an affordable price.
- ◆ Elite-Ti models support Low/Mid/High CHIRP and 50/83/200/455/800kHz frequencies.

Elite 5 Ti Feature Summary:

- ◆ High-resolution touch display - LED-backlit colour display with touchscreen interface provides fast, fingertip access to all Elite-Ti features
- ◆ CHIRP Sonar, StructureScan® HD and DownScan Imaging® - CHIRP Sonar offers improved fish-target separation and screen clarity, while the StructureScan® HD sonar imaging system with exclusive Lowrance DownScan Imaging® delivers photo-like images of fish-holding structure on both sides and directly beneath your boat. StructureScan HD requires optional TotalScan® transducer.
- ◆ TrackBack® - Rewind your CHIRP sonar, SideScan or DownScan Imaging history to review structure or fish targets and mark the location with a waypoint
- ◆ Internal GPS antenna - highly accurate, built-in GPS antenna
- ◆ Optional chart upgrades - Global chart upgrade options include Navionics + and Jeppesen C-MAP MAX-N and MAX-N+.
- ◆ Built-in wireless connectivity - Provides access to the GoFree Cloud where you can shop, purchase, download and immediately use Insight maps, and third-party maps from GoFree partners
- ◆ MicroSD card slot

NC12423001

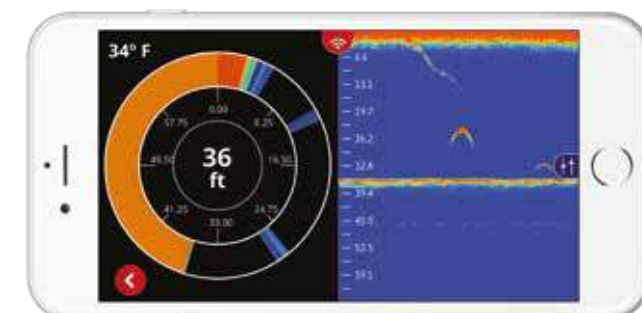
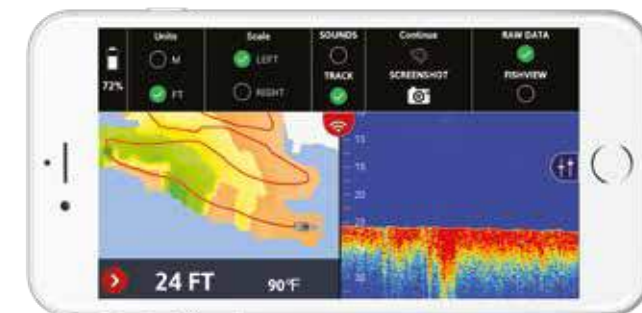
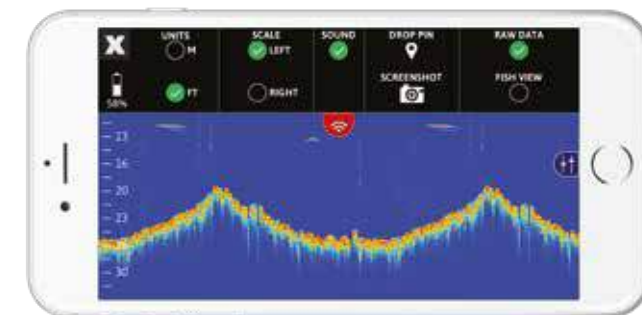
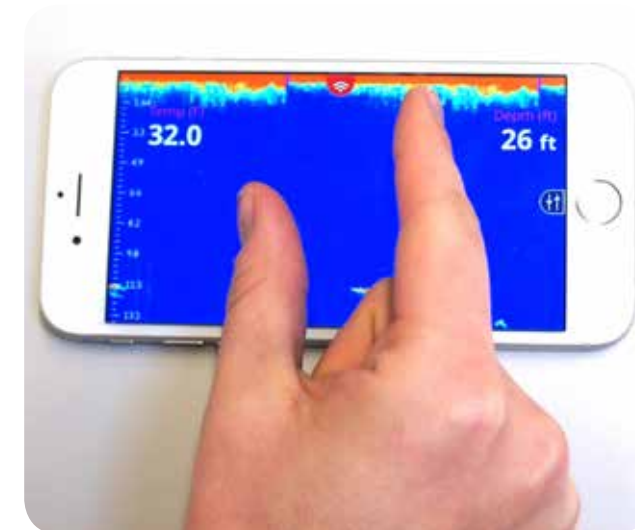
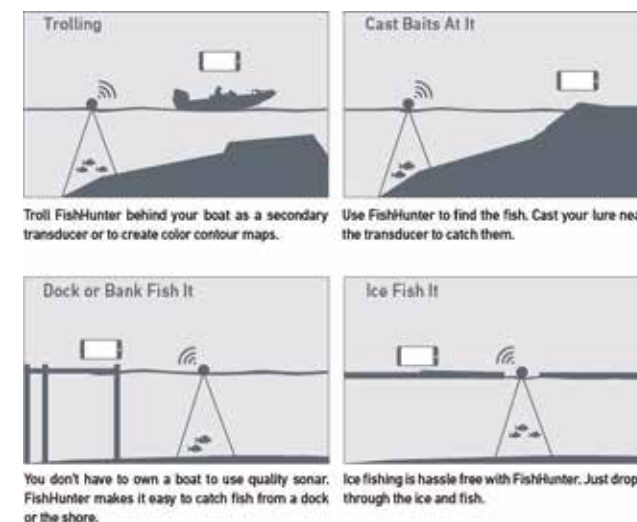
LOWRANCE



FISH HUNTER 3D

- ◆ With Fish Hunter 3D, anglers fishing from the bank, dock or pier will know where to cast every time
- ◆ Lowrance Fish Hunter wireless castable transducers - connect to Android and iOS phones and tablets via WiFi
- ◆ Provides real time sonar data underneath the transducer
- ◆ Use in many situation
- ◆ Easy to use - utilise the power of your smart phone to optimise your day of fishing
- ◆ 3D and live bathymetric maps give users the best view of the water they are fishing
- ◆ Innovative features such as directional mode identify fish location beneath the transducer
- ◆ Battery life: Up to 10 hrs or up to 500 hrs stand by
- ◆ Depth range: Up to 55m
- ◆ Frequency: 381, 475, 675 HZ
- ◆ Minimum depth: 0.4m
- ◆ Wi-Fi range: Up to 65m

NC14240001





LIFEBUOYS (SOLAS APPROVED)

24" - SRLB24 30" - SRLB30C



LIFEBUOY CABINET

850 x 800 x 230 mm - 6.5kg

SRLBC

LIFEBUOY CABINET COVER

SRLBCL

GALVANIZED BASE PLATE - 1.5M HIGH

SRLBCP15



ENCAPSULATED FLOATING ROPE HOLDER

- Tough plastic UV resistant
- Fits neatly into the internal diameter of a lifebuoy
- Makes it easy to dispense the lifebuoy without the rope twisting and tangling

For 24" Lifebuoy - SRLH24 For 30" Lifebuoy - SRLH30



30M - ORANGE FLOATING HEAVING LINE

8mm diameter

AQMHLUP0830

ORANGE RESCUE SAFETY HEAVING LINE IN A BAG

8mm floating rope 30m Line

AQMHLBG0830



PLASTIC WHISTLE

- 2 tone
- Fits all lifejackets

TRL0500009



WATERPROOF FIRST AID KIT OUTDOOR POUCHES

- Small Kit: AF Wipes x4, Burn Gels x1, Lint Pad x1, Eyepads x1, Eyewash x1, Guide Leaflet x1, Safety Pins x12, Vent Aids x1, Washproof Plasters x10
- Medium Kit: AF Wipes x4, Lint Pad x2, Eyepads x1, Eyewash Pods x2, Gloves(pair) x2, Glow Stick x1, Guidance Leaflet x1, Ice Pack x1, Medium Dressings x1, Safety Pins x12, Triangular Bandages x1, Vent Aids x1, Washproof Plasters x 20
- Large Kit: AF Wipes x10, Burn Gels x2, Lint Pad x5, Bandage x1, Eyepads x2, Eyewash Pods x2, Finger Bandage x1, Foil Blanket x1, Gauze swabs x5, Gloves (pair) x2, Glow Stick x1, Guidance Leaflet x1, Ice Pack x1, Large Dressing x1, Medium Dressings x2, Safety Pins x12, Triangular Bandages x2, Vent Aids x1, Washproof Plasters x20

Small Outdoor Pouches - Q010323

Medium Outdoor Pouches - Q010324

Large Outdoor Pouches - Q010325



NEW



MARINA BUOYANCY AID

Rated to 50Newton CE EN ISO12402-5

- Heavy gauge zip with pull keeper at top
- Concealed zip safety pocket on left hand outer side for compass etc
- Velcro closure pocket on right hand outer side
- Whistle on lanyard located in inner right hand side pocket
- Enclosed elasticated under arms and shoulder straps for comfort fit
- Heavy duty nylon buckle with fully adjustable webbing and one handed release
- Enclosed elasticated waist hem

AQMBFJ-003S
XS-S 30-50kg

AQMBFJ-003M
M-L 50-70kg

AQMBFJ-003L
L-XXL +70kg



NEW



JIVE BUOYANCY AID

Slip over design ideal for kayaking, action sports

- A** Slip over design ideal for kayaking, action sports
- B** Fully adjustable 2 x webbing adjusters on both sides of jacket
- C** Front mesh pocket with Velcro closure
- D** Includes whistle with lanyard in front mesh pocket
- E** Fleece lined front handwarmer pockets behind front mesh pocket
- F** Reflective piping along top of front pocket and chest level of jacket
- G** Reflective strips on either side of chest
- H** Zipped pocket under chest with plenty of room for compasses etc.
- I** Enclosed elasticated under arms
- J** Zipped pocket on back for further storage/hydration packs
- K** Reflective tape runs down back on both sides
- L** Shoulder straps with neoprene padding and webbing adjusters

AQMBFJ-001S
XS-S 30-50kg

AQMBFJ-001M
M-L 50-70kg

AQMBFJ-001L
L-XXL +70kg



RESCUE ROPE

- ◆ 10Mm diameter
- ◆ High visibility yellow with red fleck
- ◆ Features: lightweight, easy to handle, floating line, high visibility
- ◆ Material: multifilament polypropylene rope construction: braid 8 plait

- ◆ Applications: ideal for safety rope, tow lines

10mm Rescue Rope, Yellow with Red fleck 100m - **AQMRRPP10100**

10mm Rescue Rope Yellow with Red fleck 300m - **AQMRRPP10300**



PE3-SERIES

- ◆ Marker buoy
- ◆ Semi hard plastic, non-inflatable marker buoys

Red - **PFPE3RD**
White - **PFPE3WH**
Yellow - **PFPE3YL**

TRAILER TIE DOWN & PERSONAL WATER-CRAFT STRAP

- ◆ Corrosion resistant hook and ratchet. Overstitched for security. Supplied singly - polybag with header card.

25mm x 3m - **Q052504**

25mm x 5m - **Q052506**



SHOCKCORD

- ◆ Pack of 4
- ◆ Diameter: 8mm, Length: 500mm
- ◆ Hook Type: Stainless Steel
- ◆ Weight: 70g

Q006028



BINOCULARS

- ◆ 10 x 50 Black
- ◆ With carry case and straps

Q037838



BRAVO 12V ELECTRIC PUMP

- ◆ 12V Electric inflator
- ◆ Inflates and deflates
- ◆ Equipped with fittings

SC06130004N



BRAVO 5 BELLOWS FOOT AIR PUMP

- ◆ High inflation performance

SC06070005



BRAVO 6 STIRRUP HAND PUMP

- ◆ Double-action pump
- ◆ Body made of ABS

SC06120006



SNAP & ZIPPER LUBRICANT

- ◆ Apply to boat snaps, metal and plastic zippers to protect against corrosion, reduce wear and friction, prevent binding and repel salt spray deposits.

- ◆ Non-toxic, non-staining.

- ◆ Will not wash off.

- ◆ 56g

SB89102



SUPER GLUE PRECISION

- ◆ 5g bottle

HK1621293



STARBRITE SALT OFF PROTECTOR

- ◆ Specifically formulated to quickly and effectively remove salt deposits from metal, fibreglass, plastic or painted surfaces
- ◆ Contains special PTEF® polymers that bond to the treated surface to help prevent the formation of future deposits

- ◆ Safe for use on all boats, vehicles, trailers, marine parts, engines, fishing and dive gear and more

- ◆ It will not etch, stain or otherwise damage metal or plastic surfaces

SB93922 - Salt Off Protector 650ml with PTEF

SB94100 - Applicator



SB94100

ULTIMATE PADDLE SPORTS CLEANER

- ◆ Spray on, wipe off to remove grime, dirt, salt deposits and more.
- ◆ PTEF polymers help protect against UV damage.

- ◆ Formulated for use on fiberglass, Kevlar and plastic rotomolded kayaks, paddleboards and canoes.

- ◆ 650ml

SB0960226F





A	
AQMBFJ-001L	49
AQMBFJ-001M	49
AQMBFJ-001S	49
AQMBFJ-003L	49
AQMBFJ-003M	49
AQMBFJ-003S	49
B	
BMZ4011	38
BMZ4012	38
BMZ4201	38
BMZ4202	38
BMZ4991	38
BMZ4992	38
BMZ5012	39
BMZ5013	39
BMZ5203	39
BMZ5205	39
BMZ5992	39
BMZ5993	39
BMZ6011	40
BMZ6012	40
BMZ6201	40
BMZ6202	40
BMZ6991	40
BMZ6992	40
BMZ7011	41
BMZ7013	41
BMZ7201	41
BMZ7203	41
BMZ7991	41
BMZ7993	41
F	
FLX3SFPD206	13
FLX3SFPD35	13
G	
GE01471	45
GE01534	43
GE05500	45
GE06971	43
GE1019241	44
GE1019824	44
GE1025459	45
GE31000716	43
GE31000749	44
GE31000750	45
GE31000754	43
GE31001337	42
GE31001339	42
GE41471	45
GE48443	42
GE48447	43
GE48484	42
GE48485	42
J	
JW0113150419	26
JW0113150521	26
JW0113150523	27
JW0113152566	27
JW0113152567	27
JW0113310645	27
JW0113311250	22
JW0113311250	24
JW0113311451	26
JW0113322552	25
JW0113322553	25
JW0113322554	25
JW0113322555	25
JW0113322601	25
JW0113322900	25
JW0113322901	25
JW0113325779	25
JW0125093870	25
JW0125158830	25
JW0125158840	25
JW0125570820	25
JW0130010120	20
JW0130010122	20
JW0130050160	21
JW0130050162	21

JW0130050164	22
JW0130051070	22
JW0130080160	23
JW0130080162	23
JW0130081070	24
JW0130081072	24
JW0140600101	18
JW0140600103	18
JW0140600105	18
JW0140610101	19
JW0140610103	19
JW0140610105	19
JW0140620101	19
JW0140620102	19
JW0164850135	17
JW0710140000	26
JW0710160000	26
JW0717800000	26
JW0719600000	26
JW0719620000	26
JW0719640000	26
JW0720000238	26
JW0720000572	26
JW0720000582	26
JW0720000583	26
JW0720000628	27
JW0720000630	27
JW0730310000	26
JW0730320000	27
JW0732530000	27
JW0760101040	14
JW0760101128	14
JW0760101130	14
JW0760110101	14
JW0760110101	14
JW0760110105	14
JW0760120105	14
JW0760120107	14
JW0760151002	15
JW0762903030	15
JW0762903032	15
JW0762903034	15
JW0763801128	16
JW0763801130	16
JW0763801132	16
JW0764451128	17
JW0764451130	17
N	
NC14013001	46
NC12423001	46
NC14016001	44
NC14240001	47
O	
OB1001B	33
OB1001BLK	33
OB1001P	33
OB1001R	33
OB1001WHT	33
OB1001Y	33
OB1002BLK	32
OB1002Y	32
OB1003B	33
OB1003BLK	33
OB1003R	33
OB1003WHT	33
OB1003Y	33
OB1004BLK	32
OB1004R	32
OB1005B	33
OB1005BLK	33
OB1005P	33
OB1005R	33
OB1005WHT	33
OB1005Y	33
OB1006	33
OB1006BLK	33
OB1006R	33
OB1006WHT	33
OB1006Y	33
OB1007B	33
OB1007BLK	33

OB1007R	33
OB1007WHT	33
OB1007Y	33
OB1008A	31
OB1008BLK	31
OB1026B	32
OB1026BLK	32
OB1031B	31
OB1031BLK	31
OB1031R	31
OB1031Y	31
OB1049BLK	32
OB1049Y	32
OB1050BLK	32
OB1051BLK	32
OB1055BLK	33
OB1059BLK	36
OB1059BLK	36
OB1059WHT	36
OB1059Y	36
OB1066F	32
OB1067F	32
OB1081BLK	31
OB1086BLK	31
OB1087BLK	32
OB1091BLK	36
OB1091WHT	36
OB1094Y	31
OB1104BLK	32
OB1105BLK	31
OB1106BLK	31
OB1135BLK	33
OB1136BLK	33
OB1143BLK	36
OB1143WHT	36
OB1145B	34
OB1145Y	34
OB1146BLK	34
OB1146R	34
OB1147HVO	34
OB1147HVV	34
OB1148HVO	33
OB1148HVV	33
OB1149HVO	35
OB1149HVV	35
OB1150BLK	34
OB1150Y	34
OB1151BLK	34
OB1151Y	34
OB1152BLK	34
OB1154BLK	35
OB1154R	35
OB1155BLK	35
OB1157HVO	34
OB1157HVV	34
OB1174CLR	33
OB1175CLR	33
OB1176CLR	33
OB1181GRY	34
OB1188BLK	31
OB1203G	36
OB1204G	36
OB1205G	36
OB001GRY	37
OB001T	37
OB002GRY	37
OB002T	37
OB004GRY	37
OB004T	37
P	
PFPE3RD	50
PFPE3WH	50
PFPE3YL	50
PSF000011100102	13
PSF000011100103	13
PSF000115020205	11
PSF000115020207	11
PSF000130010015	4
PSF000130010017	4
PSF000141011915	10
PSF000141011917	10

PSF000156021805	12
PSF000158011017	8
PSF000301020103	13
PSF000301020104	13
PSF0003012010104	13
PSF000406030103	13
PSF000406030104	13
PSF000406030105	13
PSF000406030108	13
PSF000406030111	13
PSF014001020915	9
PSF014001020917	9
PSF015101210104	7
PSF015101220104	7
PSF015301210103	5
PSF015301210104	5
PSF015301210109	5
PSF015301220103	5
PSF015301220104	5
PSF015301220109	5
PSF015401210104	6
PSF015401220104	6
PSF016015211704	3
PSF016015221704	3
PSF01615211803	2
PSF016215210004	2
PSF13001000525	4
Q	
Q005154	27
Q005155	27
Q005156	27
Q010323	44
Q010324	44
Q010325	44
Q037838	51
Q052504	50
Q052506	50
R	
RUKABFK	29
RUKBB004	28
RUKBLH001	29
RUKBPUMP	30
RUKKR023	29
RUKP009BA	28
RUKPL002B	30
RUKRHBKM	30
RUKRHBKS	30
RUKRHRDM	30
RUKRHRDS	30
RUKRHYEM	30
RUKRHYES	30
RUKS001L	29
RUKS002L	29
RUKS3	30
RUKSS001B	30
RUKSS002B	30
RUKSS003B	30
RUKT001	28
RUKT002	28
S	
SB89102	51
SB93922	51
SB94100	51
SCO6070005	51
SCO6120006	51
SCO6130004N	51
SR100BPP10R	50
SR300BPP10R	50
SRLB24	44
SRLB30C	48
SRLBC	44
SRLBCL	44
SRLH24	44
SRLH30	44
SRLBCP15	44
SRSK1080C	44
SRTL BAG	44
T	
TRL0500009	44

TERMS & CONDITIONS

1. CONTRACTS

- a. Contracts are made and orders accepted only upon and subject to these Terms and Conditions of Sale. All other conditions are hereby excluded unless expressly accepted in writing by Bainbridge International Ltd or Aqua-Marine International Ltd (hereinafter called the "Seller").
- b. In entering into a contract with the Seller, the contracting party (hereinafter called the "Buyer") acknowledges that the contract has not been induced by any representations orally or in writing made by the Seller, its servants or agents.
- c. Any quotation, estimate or tender previously given or made by the Seller was not an offer but an intimation of the terms upon which the Seller was prepared to negotiate. The offer to contract with the Buyer made by these conditions may be accepted by the Buyer in a formal manner or may be inferred from the Buyer's acceptance of performance, in whole or in part, by the Seller. Any conditions contained in any purported acceptance by the Buyer shall be disregarded and the acceptance shall be construed as an unqualified acceptance of these conditions.
- d. Any typographical, clerical or other error or omission in any sales literature, quotation, price list, acceptance of offer, invoice or other document or information issued by the Seller shall be subject to correction without any liability on the part of the Seller.

2. PRICES

- a. Unless expressly stated otherwise by the Sellers, all prices quoted are ex works and exclude the cost of packing. Any applicable value added tax or any other sales tax or excise duties paid or payable by the Seller shall be added to the price and shall be payable by the Buyer.
- b. The Seller may, at their sole absolute discretion, accept or reject any order placed by the Buyer. The Seller may change the price of goods for future invoiced goods to the Buyer without notice.
- c. In the event of the Buyer cancelling a part of the order in accordance with the provisions of Clause 12, the Seller reserves the right to revise the price or prices quoted for goods already delivered.
- d. The contract price is, unless specifically agreed upon in writing by the Seller, payable in Pound Sterling. The Seller reserves the right to review the contract price(s) in the event of devaluation of the Pound Sterling or substantial change in the value of Pound Sterling in the foreign exchange markets.

3. CONDITIONS AND WARRANTIES

- a. Seller shall not be liable for the normal manufacturing defects nor any customary variations from quantities or specifications. A variance of not more than 15% either way from the total specified weight, quantity or length shall be deemed compliance with this contract.
- b. Where samples of goods or a colour chart are provided, these are submitted only as indicative of the class, size or colour of goods quoted for and sales of goods shall not be by reference to any such samples or colour charts.
- c. Whilst all description and illustrations of the goods in (interalia) catalogues, brochures, web sites and price lists provided by the Seller have been carefully prepared, they are intended nevertheless for general guidance only and do not form part of any contract for sale of goods and no responsibility is accepted for any errors or omissions therein or for any loss or damage resulting from reliance on such descriptions and illustrations.
- d. When the Seller agrees to provide a specially designed plan, the Buyer agrees that he is obliged to check the accuracy and suitability of the plan and that the Seller shall not be liable for any omissions or inaccuracies in the measurements given. The copyright in the plan drawn up by the Seller is, and remains, their property and may not be reproduced in whole or in part without written consent.
- e. If the Buyer claims or detects a defect in the goods, the Buyer will seek prior approval and return those goods to the Seller or, if the goods are retained by the Buyer, indemnify and keep the Seller indemnified against all liability and claims which may arise out of or incidental to the defect.
- f. The Seller has undertaken no responsibility for learning about the end purpose or use for which the goods are to be used, and the Buyer shall undertake to conduct whatever tests or examinations are necessary to confirm that goods are suitable for such end use.
- g. Any textile products that may be sold hereunder are sold subject to any imperfections that are typically regarded as acceptable in the textile trade resulting from the weaving and finishing thereof, and Seller shall have no liability in connection with any such imperfections. Buyer warrants that all merchandise covered by this contract is purchased for resale as tangible personal property, or to be incorporated as a component or part of other tangible property to be produced for sale by manufacturing, assembling or processing.
- h. The Buyer shall not be entitled to accept part only of the goods.

4. DELIVERY BY THE SELLER

- a. Unless and except as otherwise expressly provided in writing by the Seller, delivery shall be ex works place of business.
- b. Any dates quoted for delivery of the goods are approximate only and the Seller shall not be liable for any delay in delivery of the goods howsoever caused. Time for delivery shall not be of the essence unless previously agreed by the Seller in writing.
- c. Where goods are offered for delivery to a site, the Seller's obligation is to deliver as near to the site as safe hard roads permit. The Buyer is to provide at its own expense the labour required for unloading and stacking.
- d. The Seller reserves the right to deliver goods by instalments and in such event each instalment shall be treated as a separate contract save that the delivery of further instalments may be withheld until goods contained in earlier instalments have been paid for in full.
- e. Where goods are held by the Seller awaiting delivery instructions, they may be subject to a storage charge. For account holding customers, payment for these goods must be made on or before the last day of the month following the month of the invoice; for non-account holding customers, payment must be made at the time of ordering.
- f. In the absence of shipping instructions, the issuing of an invoice shall constitute delivery to the Buyer.

5. COLLECTION BY THE BUYER

- a. Where goods are sold "ex-factory" the Buyer shall collect the goods at the Sellers premises within seven days of the Seller's notifying the buyers that the goods are ready for collection.

- b. If the Buyer fails to collect the goods within seven days of notification that they are ready for collection, then, without prejudice to any other right or remedy available to the Seller, the Seller may:
 - i. Store the goods until actual delivery and charge the Buyer for reasonable costs (including insurance) of storage; or
 - ii. Sell the goods at the best price readily obtainable (after deducting all reasonable storage and selling expenses) account to the Buyer for the excess over the price under the contract or charge the Buyer for any shortfall below the price.
- 6. DAMAGE, LOSS, SHORT DELIVERY**
 - a. On delivery, the Buyer shall examine the goods for defects and completeness. Thereafter no claim for damage in transit, for shortage in delivery, or for loss of goods will be entertained except, in the case of damage, a separate notice in writing is given to the Carriers or to the Seller within three days of the receipt of the goods, followed within 14 days of the date of advice of despatch by a complete claim in writing; or, in the case of loss of goods, a separate notice in writing and a claim is given to the Seller and Carriers within 14 days of the date of the Seller's advice of despatch to the Buyer. In all cases a signature "unexamined" shall be deemed to be an unconditional acceptance of the goods.
 - b. The Seller shall not in any circumstances be liable, whether in contract or tort, to the Buyer for any indirect or consequential loss or damage (including without limitation, loss of profits, loss of contracts or damage to property) or for any claim against the Buyer by any third party.
 - c. The Seller's liability for damage or non-delivery of goods duly notified in accordance with the above shall in any event be limited to replacement of the goods within a reasonable time (or, at the Seller's option, refunding the price thereof) whether the damage or non-delivery is due to the Seller's negligence or otherwise.

7. ROLL LENGTHS

- a. Where goods are sold as a measured length there may be a variation in length of plus or minus 2%. In the event of a claim the seller reserves the right to insist that the roll be returned for measuring before a settlement is agreed.

8. CREDIT AGREEMENTS

- a. Where the Sellers has granted the Buyer a credit facility, the price of goods and/or service shall be paid by the Buyer as per the payment terms specified on the invoice or, if the Seller shall so require under Clause [b] of this Clause 7, to be paid on demand without any period of notice.
- b. The Seller reserves the right to withdraw or vary credit facilities at any time to the Buyer without either giving any reason for doing so, or thereby incurring any liability to the Buyer.
- c. If the Buyer takes goods from the Seller in excess of the Buyer's credit limit, the Seller may require payment on delivery for such excess of goods.

9. TERMS OF PAYMENT

- a. Unless credit facilities have been granted to the Buyer or unless otherwise specifically provided in writing, the price for the goods shall be paid by the Buyer in cash on delivery and in default the Seller shall be entitled to withhold delivery until payment. In the case of non-cash sales, the Seller shall be entitled to charge and recover interest from the Buyer on the price of the goods calculated at whichever shall be the greater: the statutory interest payable under the Late Payment of Commercial Debts (Interest) Act 1998 or the rate of 4% per annum
- b. Unless otherwise expressly agreed upon in writing, no other discounts or commissions are to become due or allowable to the Buyer (any previous course of dealing between the parties notwithstanding).
- c. Where there is a term of contract that payment of any of the Seller's invoices is dependant upon the issues of the certificate of a third party, the due date for payment of the invoice is not later than 14 days after the issue of the relevant certificate.

10. LATE PAYMENT

- a. When payment of any of the Seller's invoices is overdue, the Seller may suspend their performance of the contracts to which the invoice relates and/or of any other contract then subsisting between the Seller and the Buyer.
- b. In the event of legal action being taken by the Seller against the Buyer for breach of payment obligations hereunder, the Buyer shall be responsible for all costs and disbursements incurred by the Seller on a full indemnity basis.

11. RISK AND LIABILITY

- a. b. c. Risk of damage to or loss of the goods shall pass to the Buyer at the time of delivery or, if the Buyer at the time of delivery of the goods, the time when the Seller has tendered delivery of the goods. For the purpose of this Clause 10, "delivery" shall mean the arrival of the goods at the place of delivery of the Buyer where delivery is by the Seller, or the safe loading of the goods into the Buyer's vehicles at the Seller's premises where delivery is through collection by the Buyer. In no event shall the Seller be liable for damages with respect to the sale or use of any product sold hereunder in any amount greater than the amount of the purchase price received by the Seller for that particular product. In addition, the Seller shall not be liable for any consequential, incidental, or special damages or costs or expenses in the event of any breach of warranty or in the event of any loss, damage injury or cost resulting from, or arising out of, or in respect of the goods being sold hereunder. When any goods are sold hereunder bear a particular label, trademark, or trade name, affixed at the request of the Buyer, it is the understanding of the parties that the Buyer warrants that he has the right to use said label trademark or trade name, and that he hereby agrees to indemnify and hold harmless the Seller against any loss, damage or claim by any person with respect thereto.
- d. The Buyer agrees to reimburse the Seller, and hold Seller harmless against liability for all expenses, including legal fees, incurred by the Seller that may arise in connection with Seller's enforcement of its rights under this contract.
- e. The Seller has undertaken no responsibility for learning about the end purpose for which the goods are to be used, and Buyer shall undertake to conduct whatever tests or examinations are necessary to confirm that goods are suitable for such end use.

12. RETENTION OF TITLE

- a. Notwithstanding delivery and the passing of risk in the goods or any other provision of these conditions, the property in the goods shall not pass to the Buyer until the Seller has received in cash (or cleared funds) payment in full of the price of the goods and all

- other goods agreed to be sold by the Seller to the Buyer for which payment is then due.
- b. Until such time as the property in the goods passes to the Buyer, the Buyer shall hold the goods as the Seller's fiduciary agent and bailee, and shall keep the goods separate from those of the Buyer and third parties and properly stored, protected and insured and identified as the Seller's property. Until that time the Buyer shall be entitled to resell or use the goods in the ordinary course of its business, but shall account to the Seller for the proceeds of the sale or otherwise of the goods, whether tangible or intangible, including insurance proceeds, and shall keep all such proceeds separate from any monies or property of the Buyer and third parties and, in the case of tangible proceeds, properly stored, protected and insured.
- c. Until such time as the property in the goods passes to the Buyer (and provided the goods are still in existence and have not been resold), the Seller shall be entitled at any time to require the Buyer to deliver up the goods to the Seller and, if the Buyer fails to do so forthwith, to enter upon any premises of the Buyer or any third party where the goods are stored and repossess the goods.
- d. The Buyer shall not be entitled to pledge or in any way charge by way of security for any indebtedness any of the goods which remain the property of the Seller, but if the Buyer does so, all monies owing by the Buyer to the Seller shall (without prejudice to any other right or remedy of the Seller) forthwith become due and payable.

13. CUSTOMER CANCELLATION OF ORDERS

Contracts and orders and parts thereof may be cancelled only by the Seller's written acceptance of such cancellation. Where the Seller accepts such cancellation, the Seller reserves the right to charge the Buyer with the amount of any losses or expenses directly or indirectly resulting from such cancellation. Where the Seller does not accept such cancellation, the Seller, reserves the right to recover the invoice price from the Buyer and to charge the Buyer with additional losses both direct and indirect resulting from such cancellation. In any case where the Seller were required to place a deposit with a manufacturer or supplier in respect of an order, the Seller may require the Buyer to reimburse such sum in the event of cancellation.

14. CUSTOMERS RETURNING GOODS

- a. The seller will only accept goods being returned by customers if prior consent has been given by the seller. In the event of wishing to return goods customers must contact the seller to obtain a 'goods return note number' that must then be attached in an appropriate manner to the goods. The seller reserves the right to refuse to accept goods being returned by a buyer. In cases where the seller does agree to accept a return the seller reserves the right to charge a handling fee not exceeding 50% based on the invoice price of the goods.
- b. Excluding circumstances where goods are being returned for the reason of damage or are subject to warrantee claim, goods being returned to the seller must arrive in a condition that allows them to be re-sold. In the event that returned goods are not in good condition the seller reserves the right to withdraw any agreement for credit with the buyer or to charge a handling fee.

15. CONSENTS

The obtaining of any necessary consents for the installation of the goods, whether from local or other authorities or for ensuring that the installation of the goods is in accordance with the provisions of any by-laws, regulations or statutes shall not be the responsibility of the Seller.

16. FORCE MAJEURE

The Seller shall not be liable to the Buyer or be deemed to be in breach of contract by reason of any delay in performing, or any failure to perform, any of the Seller's obligations in relation to the goods, if the delay or failure was due to any cause beyond the Seller's reasonable control. Without prejudice to the generality of the foregoing, the following shall be regarded as causes beyond the Seller's control:

- a. Act of God, explosion, flood, tempest, fire or accident;
- b. War or threat of war, sabotage, insurrection, civil disturbance or requisition;
- c. Acts, restrictions, regulations, by-laws, prohibitions or measures of any kind on the part of any governmental, parliamentary or local authority;
- d. Import or export regulations or embargoes;
- e. Strikes, lock-outs or other industrial actions or trade disputes (whether involving employees of the Seller's or of a third party);
- f. Difficulties in obtaining raw materials, labour, fuel, parts or machinery;
- g. Power failure or breakdown in machinery.

17. INSOLVENCY

The Seller shall have the right to terminate the contract forthwith where the buyer becomes insolvent or bankrupt or makes arrangements with its creditors or suffers a receiver to be appointed or being a body corporate enters into liquidation (other than in connection with a reconstruction or amalgamation) in any of which cases the Seller shall have no further obligation hereunder and the price for all goods delivered and work done shall become immediately due and payable.

18. LAW APPLICABLE

These conditions shall be governed and construed in accordance with English law and all disputes arising in connection therewith shall be submitted to the jurisdiction of the English courts.

19. GENERAL

- a. No provision hereof shall be deemed waived and no breach or default excused unless such waiver or excuse is in writing signed by an authorised officer of the party making the writing.
- b. If any provision or part of a provision of this Agreement shall be, or found by any authority or court of competent jurisdiction to be, invalid or unenforceable, such invalidity or unenforceability shall not affect the other provisions or parts of such provisions of this Agreement, all of which shall remain in full force and effect.
- c. The headings in this document are inserted for convenience only and shall not constitute a part of or are referred to in its interpretation.

© Bainbridge International Limited 2014 Bainbridge® is a registered trademark of Bainbridge International Limited. Bainbridge Sail & Cover is a trademark of Bainbridge International Limited. Aqua-Marine is a trademark of Aqua-Marine International Limited
Bainbridge International Ltd. 8 Flanders Park, Hedge End, Southampton, Hampshire, SO30 2FZ England
Tel: +44 (0)1489 776030 • Fax: +44 (0)1489 776035
Email: info@bainbridgeint.co.uk • www.bainbridgeint.com



ALL SALES ENQUIRIES:

Bainbridge International Ltd. 8 Flanders Park, Hedge End, Southampton, Hampshire SO30 2FZ UK

T: +44 (0) 1489 776000 **F:** +44 (0) 1489 776005 **E:** info@bainbridgeint.co.uk
W: www.bainbridgewatercraft.com



LOWRANCE



AQUAMARINE

Ruk
Sport